



INTEGRATED DC SUBCOMBINERS

FEATURES

- Fuses or breaker subcombiners required for SGI 225-500PE, SGI 500XT, SGI 500/750XTM
- Fuses or breakers subcombiners optional for the PVI 50-100KW
- Subcombiners connect multiple array string combiners into one location

SUBCOMBINERS

Yaskawa - Solectria Solar offers DC subcombiner options for its commercial and utility-scale grid-tied PV inverters - PVI 50/60/75/85/100KW, SGI 225/266/300/500/500PE, SGI 500XT, and SGI 500/750XTM. Fuse or breaker subcombiners required for all SGI inverters. These subcombiners eliminate the need for an external sub-array combiner and are available for a variety of fused positions and fused ranges.



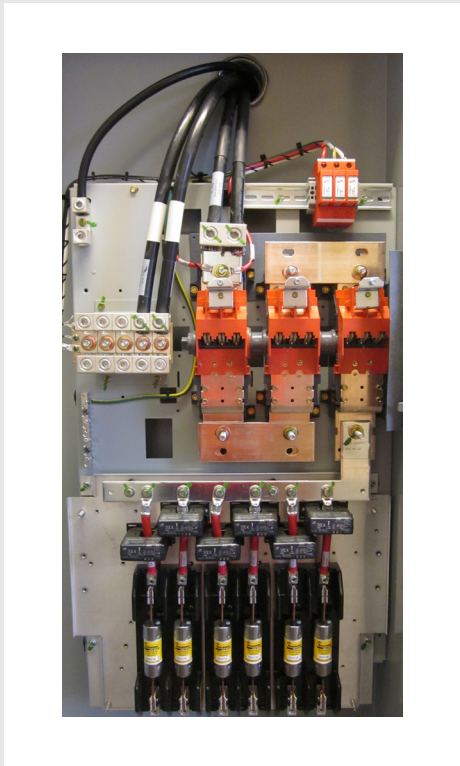
SPECIFICATIONS	FUSED POSITIONS	FUSE RANGE
PVI 50/60/75/85/100KW		
Fuses	2	225 A, 250 A, 300 A
	2, 3, 4	110 A, 125 A, 150 A, 175 A, 200 A
	2, 4, 6	70 A, 80 A, 90 A, 100 A
	6, 8	40 A, 50 A, 60 A
Breakers	2	225 A, 250 A, 300 A
	2, 3, 4	110 A, 125 A, 150 A, 175 A, 200 A
	2, 3, 4, 5, 6, 7, 8	40 A, 50 A, 60 A, 70 A, 80 A, 90 A, 100 A
SGL 225/250/266/300 - Subcombiner Options (Fuses or Breakers Required)		
Fuses	6	225 A, 250 A, 300 A, 350 A, 400 A
	12	110 A, 125 A, 150 A, 175 A, 200 A
	24	70 A, 80 A, 90 A, 100 A
Breakers	6	225 A, 250 A, 300 A, 350 A, 400 A
	12	110 A, 125 A, 150 A, 175 A, 200 A
SGL 500/500PE/500XT - Subcombiner Options (Fuses or Breakers Required)		
Fuses	8	225 A, 250 A, 300 A, 350 A, 400 A
	16	110 A, 125 A, 150 A, 175 A, 200 A
	32	70 A, 80 A, 90 A, 100 A
Breakers	8	225 A, 250 A, 300 A, 350 A, 400 A
	16	110 A, 125 A, 150 A, 175 A, 200 A
SGL 500/750XTM - Subcombiner Options (Fuses or Breakers Required)		
Fuses	4, 5, 6, 7, 8, 9, 10, 11, 12, 13, 14, 15, 16	100 A, 110 A, 125 A, 160 A, 175 A, 200 A, 250 A, 300 A, 315 A, 350 A, 400 A
Breakers	4, 5, 6, 7, 8, 9, 10, 11, 12, 13, 14, 15	125 A, 150 A, 175 A, 200 A, 225 A, 250 A, 300 A, 350 A



SGL 500 with 16 fused positions, 4 - 150A fuses, 4 - 125A fuses, and 8 - 175A fuses



SGL 500 with 8 breaker positions, 7 - 400A breakers, and 1 - 350A breakers



PVI 100KW with 6 fused positions, 100 A fuses