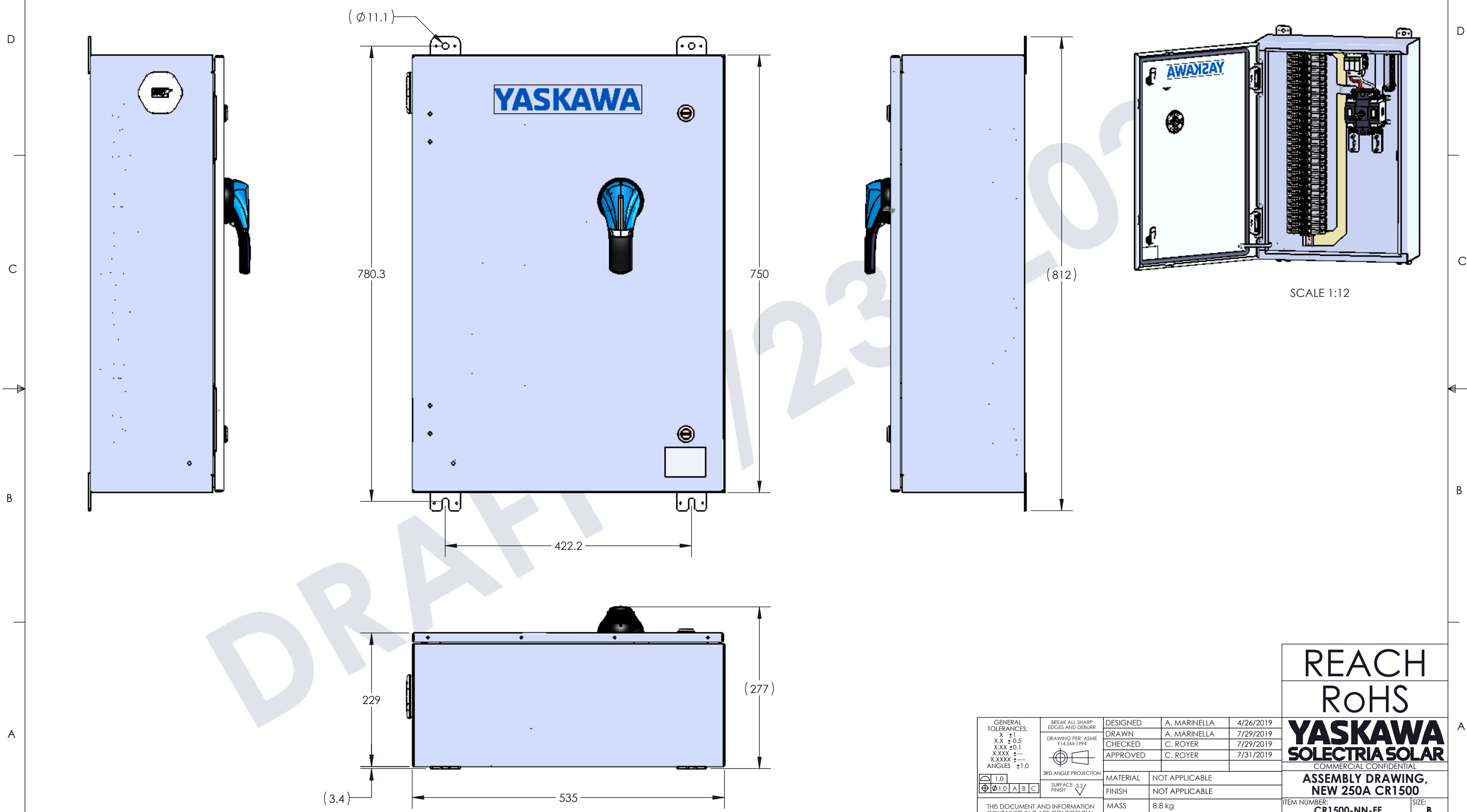


6 5 4 3 2 1

REVISIONS			DRAWN	DATE
REV	EC#	DESCRIPTION	A. MARINELLA	4/23/2020
0	-	• INITIAL RELEASE		



DRAFT 12305

GENERAL TOLERANCES: X ±1 X.X ±0.5 X.XX ±0.1 X.XXX ±0.05 X.XXXX ±0.02 ANGLES ±1.0	BREAK ALL SHARP EDGES AND DEBURR	DESIGNED	A. MARINELLA	4/26/2019
	DRAWING PER: ASME Y14.5M-1994	DRAWN	A. MARINELLA	7/29/2019
	3RD ANGLE PROJECTION	CHECKED	C. ROYER	7/29/2019
	SURFACE FINISH 3.2	APPROVED	C. ROYER	7/31/2019
1.0		MATERIAL	NOT APPLICABLE	
$\phi 1.0$ A B C		FINISH	NOT APPLICABLE	
		MASS	8.8 kg	
		FIRST USED	XGI 1500	
		DIMENSIONS ARE IN MILLIMETERS	DO NOT UPDATE MANUALLY	DO NOT SCALE

REACH
RoHS
YASKAWA
SOLECTRIA SOLAR
COMMERCIAL CONFIDENTIAL
ASSEMBLY DRAWING,
NEW 250A CR1500

ITEM NUMBER:	CR1500-NN-FF	SIZE:	B
DRAWING NUMBER:	DOCR-071027	REV:	0
SCALE:	T:6	SHEET	1 OF 5

SOLREN YAI SIZE-B, mm 6 5 4 3 2 1

6

5

4

3

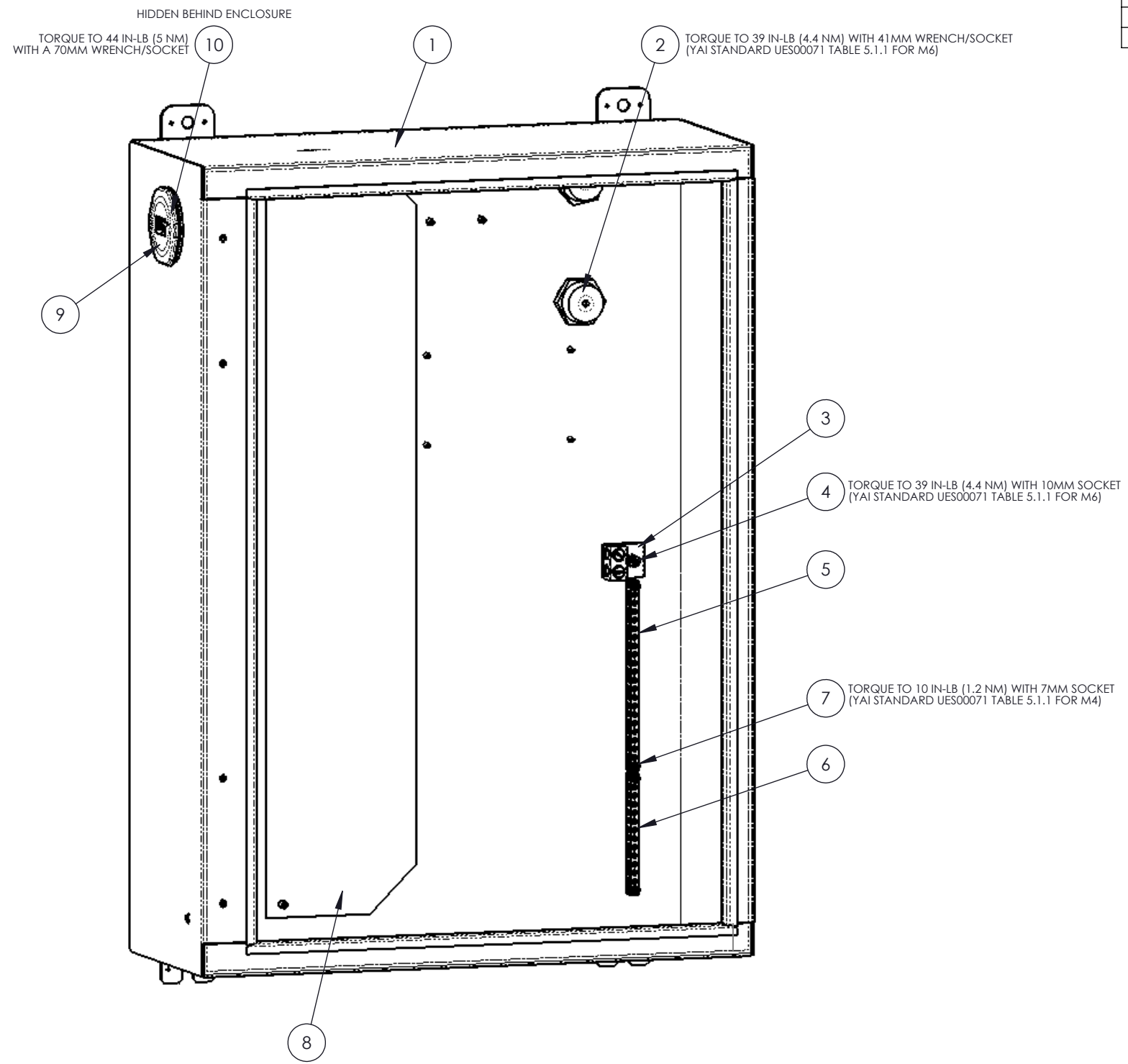
2

1

ITEM	PART NUMBER	DESCRIPTION	QTY.
1	MTLSR-070947	ENCLOSURE, HINGED DOOR, NEW CR1500	1
2	USC-1574	STO, INS, M6x1.0, F-F, 35 L	2
3	05P00204-0166	TERMINAL BLOCK, NEUTRAL, XGI 1500	1
4	USC-1514	NUT, HEX, M6x1.0, STL, ZP, 10 WS, SEMS, EXT STAR	2
5	ELC-090049	GROUND BAR, 20 CIRCUIT	1
6	ELC-090048	GROUND BAR, 12 CIRCUIT	1
7	HDW-300179	NUT, HEX, M4x0.7, STL, ZP, 7 WS, SEMS, EXT STAR	4
8	MTLSR-070971	INSULATION SHEET, FUSE BAR, CR1500	1
9	ELC-100317	VENT, GORE, M32 X 1.5, GREY	1
10	ELC-100318	NUT, GORE VENT, M32 X 1.5, GREY	1

D
C
B
A

D
C
B
A



REACH
RoHS
YASKAWA
SOLECTRIA SOLAR

COMMERCIAL CONFIDENTIAL

**ASSEMBLY DRAWING,
NEW 250A CR1500**

ITEM NUMBER: CR1500-NN-FF	SIZE: B
DRAWING NUMBER: DOCR-071027	REV: 0

SCALE: 1:5 SHEET 2 OF 5

SOLREN YAI SIZE-B, mm 6

5

4

3

2

1

6

5

4

3

2

1

ITEM	PART NUMBER	DESCRIPTION	QTY.
7	HDW-300179	NUT, HEX, M4x0.7, STL, ZP, 7 WS, SEMS, EXT STAR	4
11	87P11026	SWITCH, 250A, 2-POLE, 1500V	1
12	MTLSR-070964	BUS BAR, OUTPUT, NEW CR1500	2
13	N/A	BOLT, HEX, M8x1.25, 25 L, SOCOMEC	2
14	N/A	WSHR, BV, M8, SOCOMEC	2
15	N/A	NUT, HEX, FLG, M8x1.25, SOCOMEC	2
16	USF00178-X	SHAFT, DC DISCONNECT, XGI 1500	1
17	UBM-0025	DIN RAIL, 15MM DEEP, SPD, COMBINERS, XGI 1500	1
18	HDW-300176	NUT, HEX, M5x0.8, STL, ZP, 8 WS, SEMS, EXT STAR	2

D

D

C

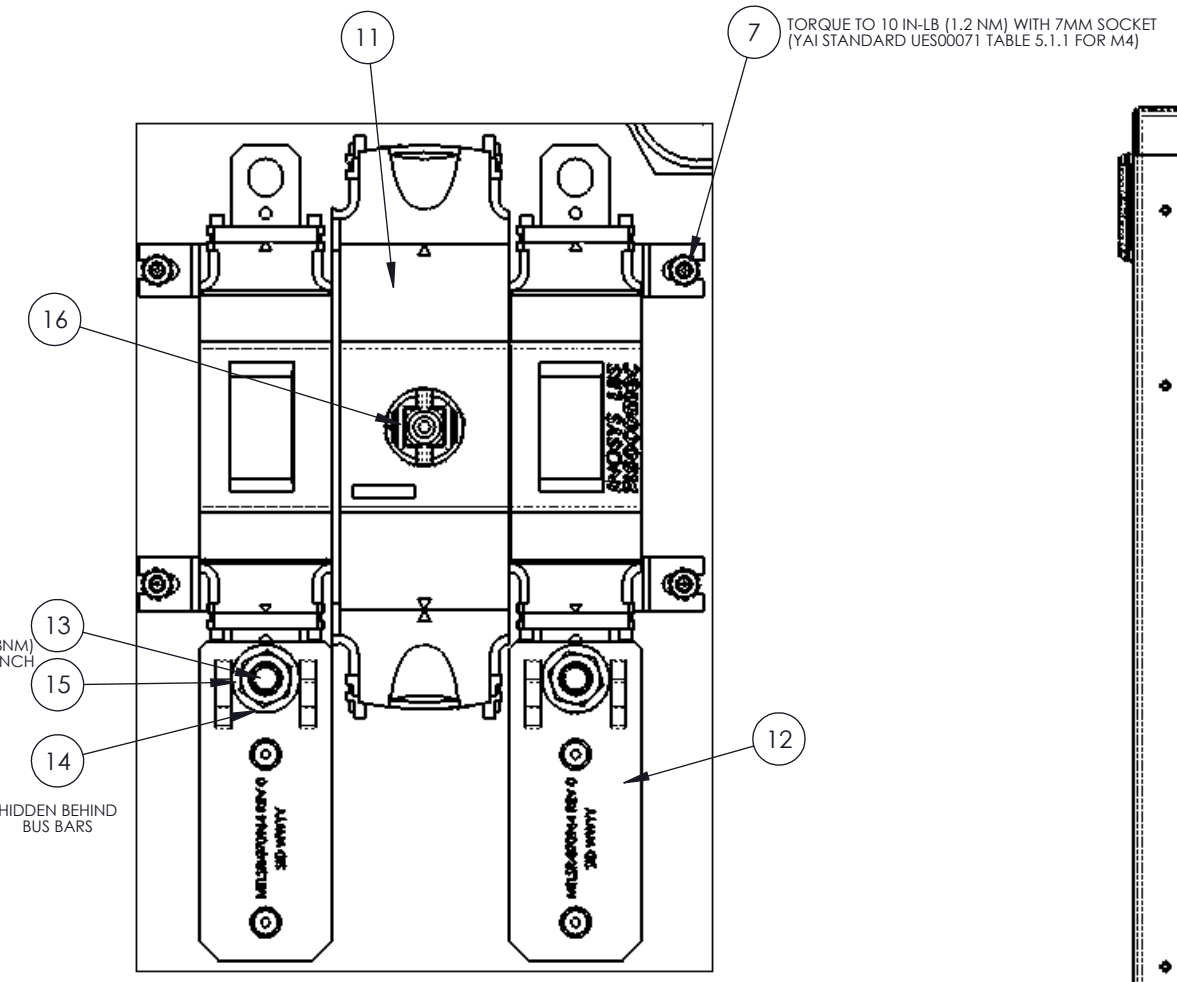
C

B

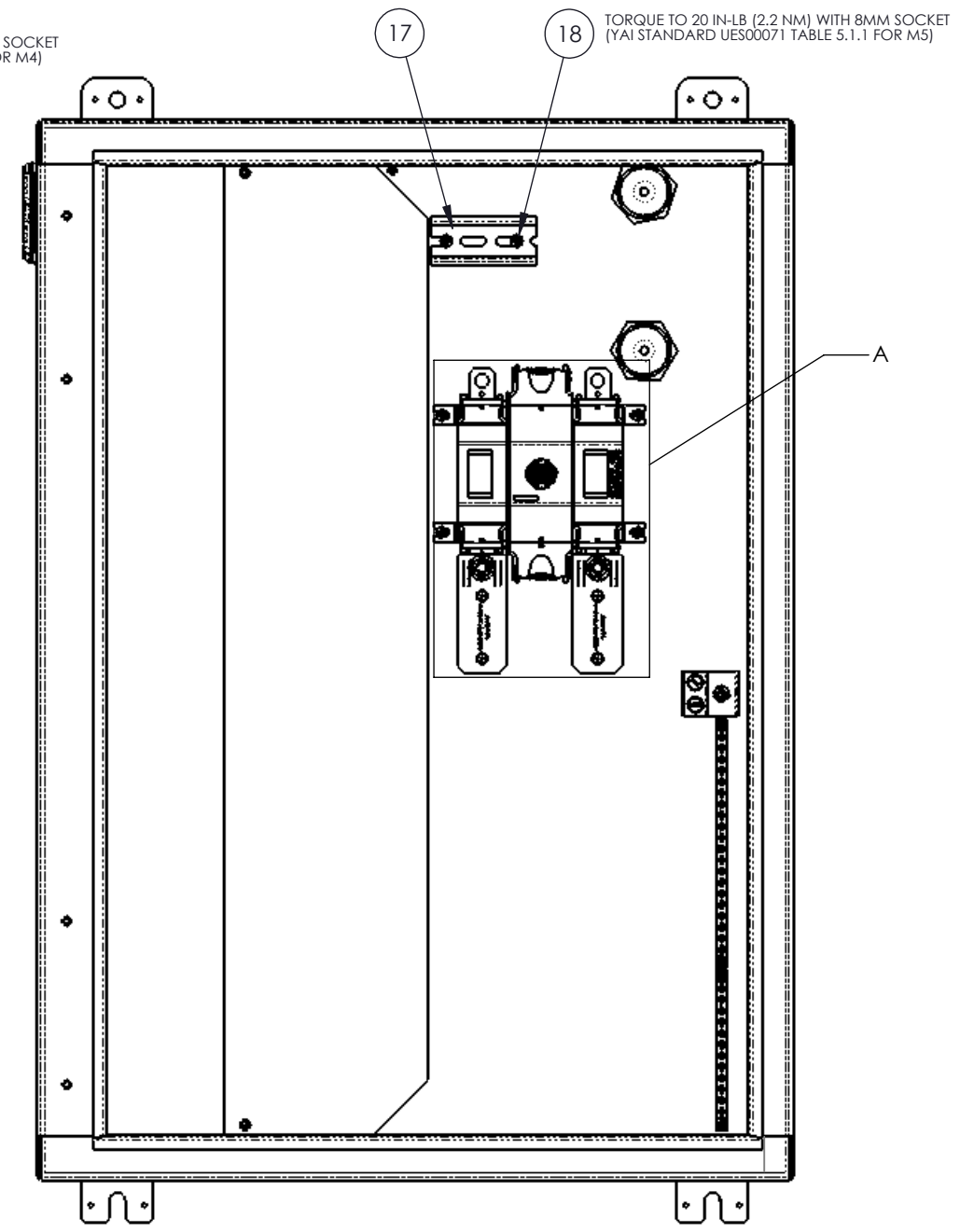
B

A

A



DETAIL A
SCALE 1:2



REACH
RoHS
YASKAWA
SOLECTRIA SOLAR
COMMERCIAL CONFIDENTIAL
ASSEMBLY DRAWING,
NEW 250A CR1500

ITEM NUMBER: CR1500-NN-FF	SIZE: B
DRAWING NUMBER: DOCR-071027	REV: 0
SCALE: 1:5	SHEET 3 OF 5

5

4

3

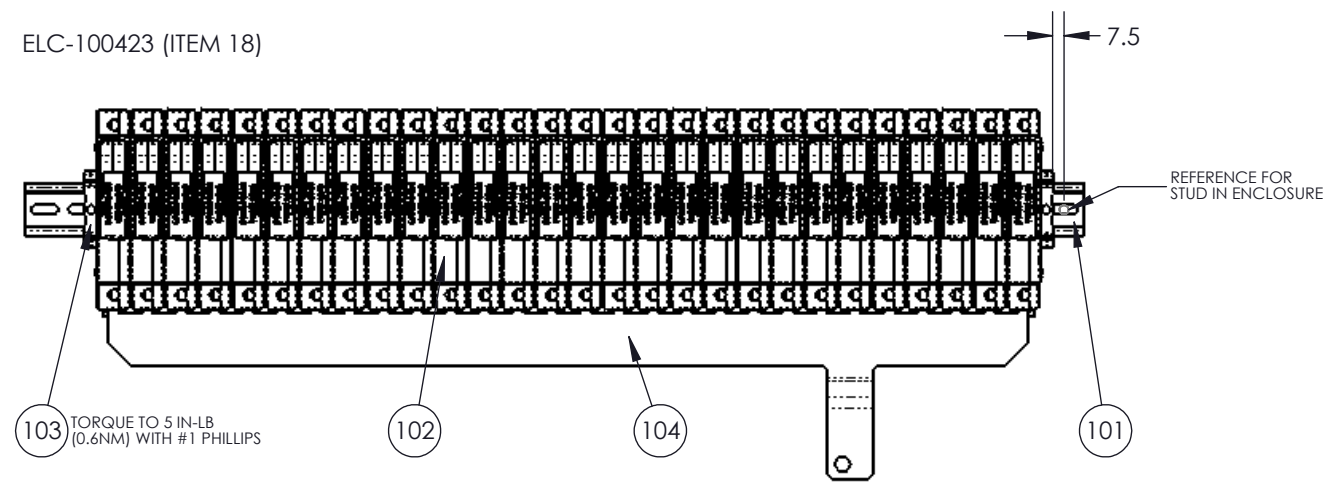
2

1

6 5 4 3 2 1

ITEM	PART NUMBER	DESCRIPTION	QTY.
4	USC-1514	NUT, HEX, M6x1.0, STL, ZP, 10 WS, SEMS, EXT STAR	1
13	N/A	BOLT, HEX, M8x1.25, 25 L, SOCOMEC	2
14	N/A	WSHR, BV, M8, SOCOMEC	2
15	N/A	NUT, HEX, FLG, M8x1.25, SOCOMEC	2
18	HDW-300176	NUT, HEX, M5x0.8, STL, ZP, 8 WS, SEMS, EXT STAR	1
19	SEE DETAIL TO LEFT	SUBASSEMBLY, BUS BAR FUSES, COMBINERS, XGI 1500	1
20	MTLSR-070957	BUS BAR, NEG, 250A, CR1500	1
21	1030	TERMINAL ASSEMBLY, 30 POSITIONS	1
22	USC00067-11	SCREW, PHIL PAN, SEMS, M6x1.0, 20 L, STL, LW + FW	2
23	ELC-100365	SURGE PROTECTION DEVICE, 1500VDC, CITEC	1
24	UTB-0244	END CLAMP, HEAVY DUTY, 35MM DIN, 9.5 WIDE, GRAY	2
25	WIH-030539	WIRE, SPD, POS, NEW CR1500	1
26	WIH-030540	WIRE, SPD, NEG, NEW CR1500	1
27	UWR01459-1	CABLE, SPD, GND, DISCOM, XGI 1500	1

ELC-100423 (ITEM 18)

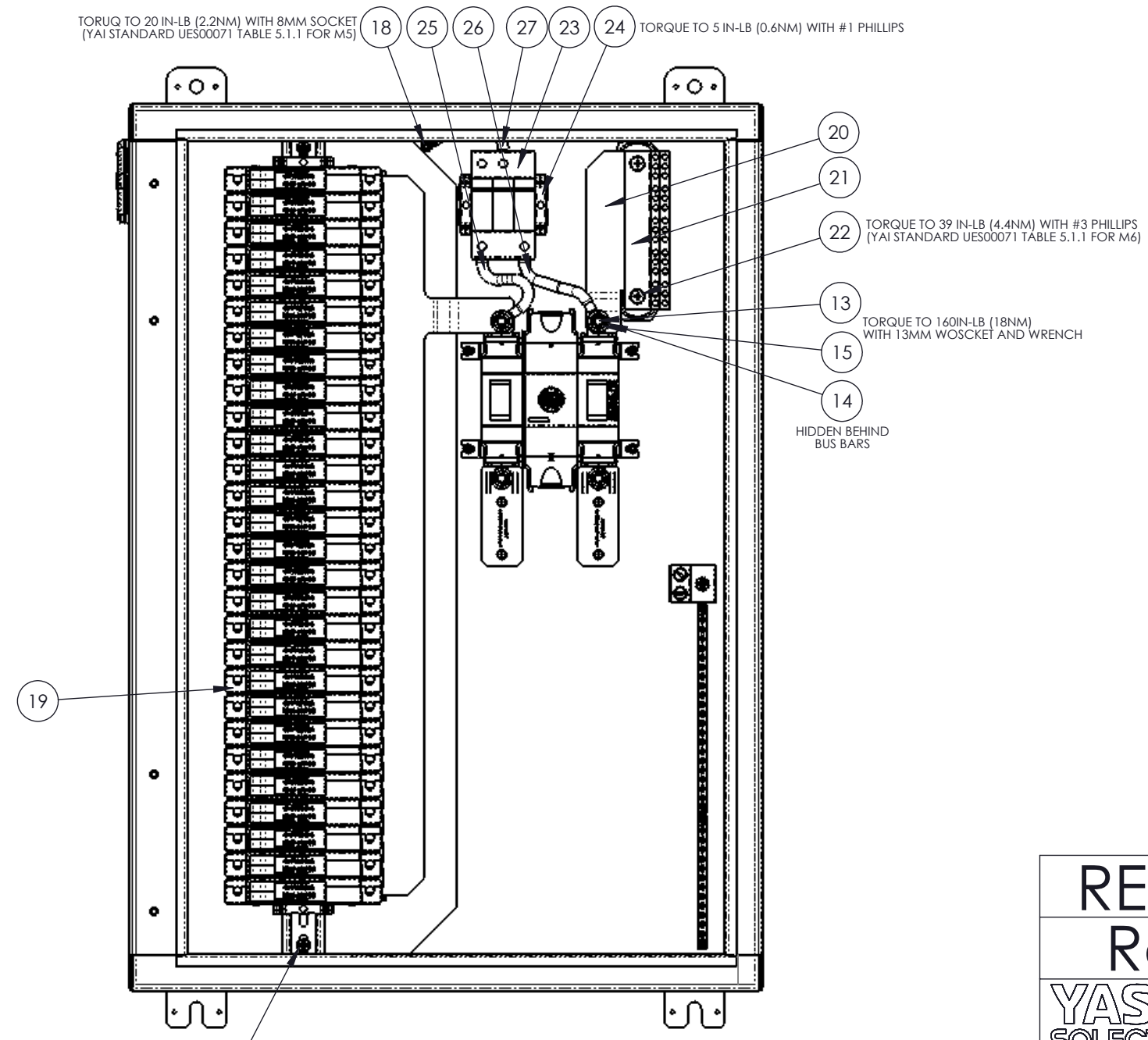


103 TORQUE TO 5 IN-LB (0.6NM) WITH #1 PHILLIPS

ITEM	PART NUMBER	DESCRIPTION	QTY.
104	MTLSR-070956	BUS BAR, FUSES, NEW CR1500	1
103	UTB-0244	END CLAMP, HEAVY DUTY, 35MM DIN, 9.5 WIDE, GRAY	2
102	UFU000765	FUSE HOLDER, 1500V, MERSEN HP15FHM32A	28
101	UBM-0025	DIN RAIL, 15MM DEEP, FUSE HOLDERS, COMBINERS, XGI 1500	700MM
ITEM	PART NUMBER	DESCRIPTION	QTY.

BILL OF MATERIAL

TORQUE TO 20 IN-LB (2.2NM) WITH 8MM SOCKET (YAI STANDARD UES00071 TABLE 5.1.1 FOR M5) 18 25 26 27 23 24 TORQUE TO 5 IN-LB (0.6NM) WITH #1 PHILLIPS



22 TORQUE TO 39 IN-LB (4.4NM) WITH #3 PHILLIPS (YAI STANDARD UES00071 TABLE 5.1.1 FOR M6)

13 TORQUE TO 160 IN-LB (18NM) WITH 13MM WOSCKET AND WRENCH

14 HIDDEN BEHIND BUS BARS

4 TORQUE TO 39 IN-LB (4.4 NM) USING A 10MM SOCKET (YAI STANDARD UES00071 TABLE 5.1.1 FOR M6)

REACH
RoHS

YASKAWA
SOLECTRIA SOLAR

COMMERCIAL CONFIDENTIAL

ASSEMBLY DRAWING,
NEW 250A CR1500

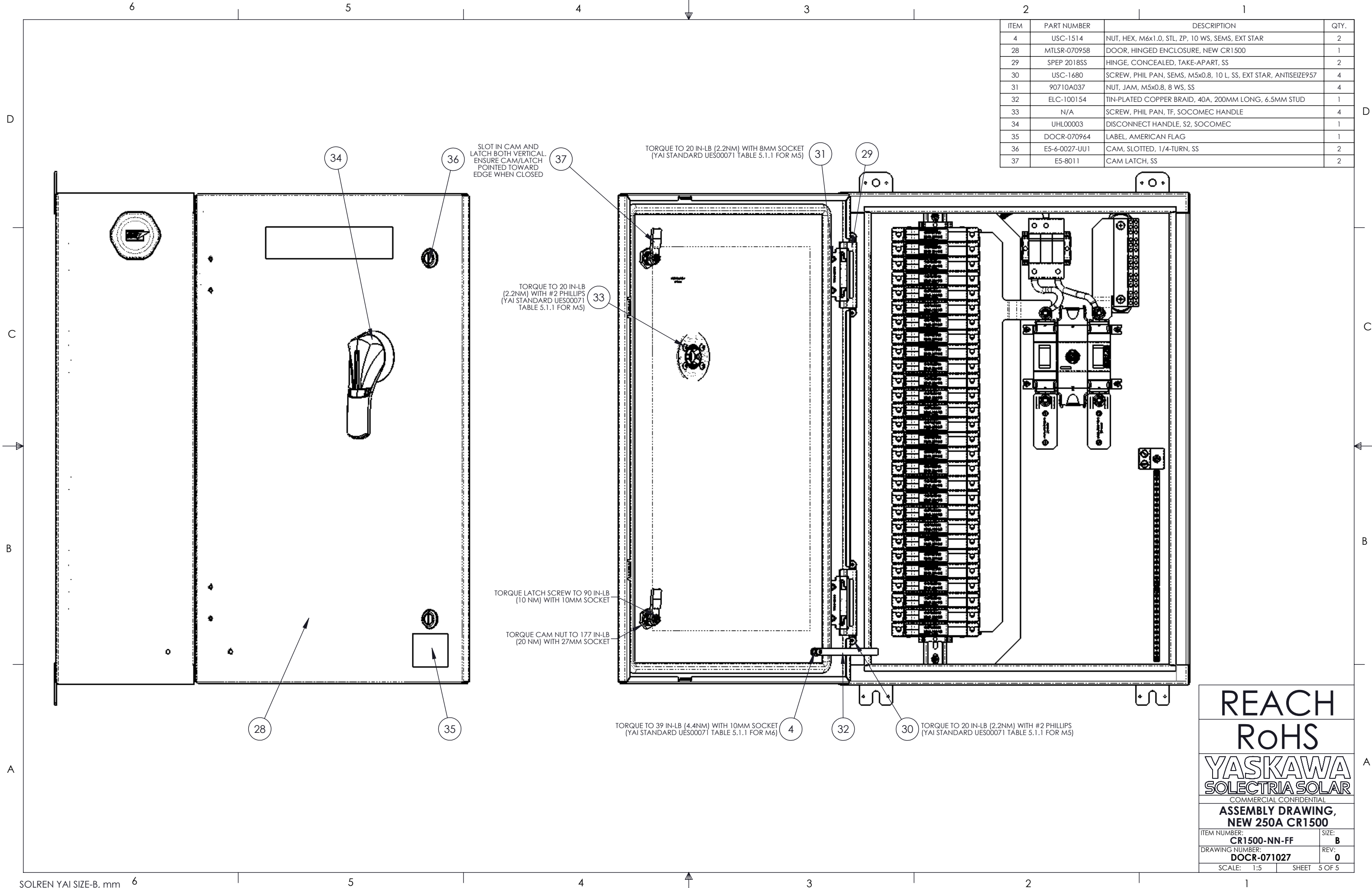
ITEM NUMBER: CR1500-NN-FF	SIZE: B
DRAWING NUMBER: DOCR-071027	REV: 0

SCALE: 1:5 SHEET 4 OF 5

D
C
B
A

D
C
B
A

SOLREN YAI SIZE-B, mm 6 5 4 3 2 1



ITEM	PART NUMBER	DESCRIPTION	QTY.
4	USC-1514	NUT, HEX, M6x1.0, STL, ZP, 10 WS, SEMS, EXT STAR	2
28	MTLSR-070958	DOOR, HINGED ENCLOSURE, NEW CR1500	1
29	SPEP 2018SS	HINGE, CONCEALED, TAKE-APART, SS	2
30	USC-1680	SCREW, PHIL PAN, SEMS, M5x0.8, 10 L, SS, EXT STAR, ANTISEIZE957	4
31	90710A037	NUT, JAM, M5x0.8, 8 WS, SS	4
32	ELC-100154	TIN-PLATED COPPER BRAID, 40A, 200MM LONG, 6.5MM STUD	1
33	N/A	SCREW, PHIL PAN, TF, SOCOMEC HANDLE	4
34	UHL00003	DISCONNECT HANDLE, S2, SOCOMEC	1
35	DOCR-070964	LABEL, AMERICAN FLAG	1
36	E5-6-0027-UU1	CAM, SLOTTED, 1/4-TURN, SS	2
37	E5-8011	CAM LATCH, SS	2

REACH
RoHS

YASKAWA
SOLECTRIA SOLAR

COMMERCIAL CONFIDENTIAL

**ASSEMBLY DRAWING,
NEW 250A CR1500**

ITEM NUMBER: CR1500-NN-FF	SIZE: B
DRAWING NUMBER: DOCR-071027	REV: 0

SCALE: 1:5 SHEET 5 OF 5