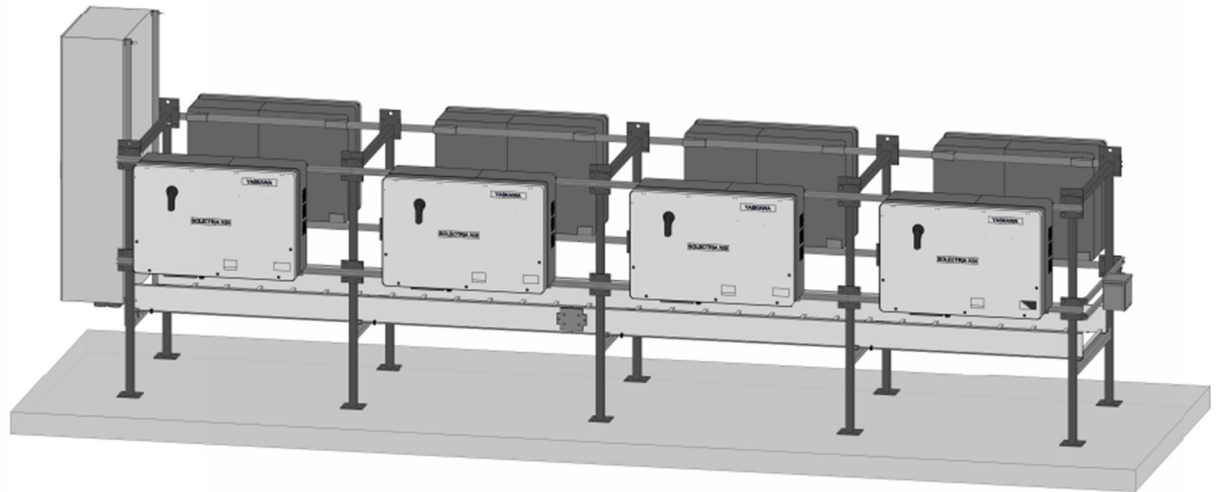


SOLECTRIA® XGI 1500

PowerRacks™

Design Guide



Contents

Introduction	3
Description	3
POWERRACK Electrical Specifications	4
POWERRACK Factory Wiring	6
AC Combiner Specifications	7
POWERRACK Mechanical Specifications	8
POWERRACK Hoisting Instructions	9
POWERRACK Startup Procedure	10
POWERRACK Shutdown Procedure	11
Switch Handle Position	11
Configuration with Low Grid SCR Values	12
Mechanical Drawings	12
2-Inverter POWERRACK Drawings	13
3-Inverter and 4-Inverter POWERRACK Drawings	18
5-Inverter and 6-Inverter POWERRACK Drawings	23
7-Inverter and 8-Inverter POWERRACK Drawings	28
Specifying a POWERRACK	33

Introduction

The **Solectria XGI 1500 POWERRACKS** are built around the Solectria XGI 1500 utility-scale inverters and serve as scalable building-blocks for multi-megawatt solar projects. Engineered with a focus on reliability, rapid deployment, and uncompromising quality, the **POWERRACKS** enable efficient and repeatable project execution.

Its modular architecture provides multiple independent MPPT zones per megawatt, enhancing energy production through precise sub-array power-point tracking while also increasing system uptime. The **Solectria XGI 1500 POWERRACK** enables streamlined installation, operation and simplified maintenance, with Solectria training and spare parts kits.

Designed and engineered in Lawrence, Massachusetts, and manufactured in Buffalo Grove, Illinois, the XGI 1500 inverters reflect Solectria's commitment to domestic innovation and production. **Solectria XGI 1500 POWERRACKS** are assembled in Canton, Massachusetts, with consistent quality and construction. Made in the USA is the hallmark of our technology and commitment to innovation.

Description

Solectria XGI 1500 POWERRACK models are designed with two through eight Solectria XGI 1500 inverters, for flexibility in overall power rating. The major components are described below:

- Solectria XGI 1500 Inverters

The flagship POWERRACKS use the **XGI 1500-250/250-600** or **XGI 1500-250/250-600-DCG** for overall ratings between 0.5MW and 2MW. The POWERRACKS can also be configured using any of the other XGI 1500 models at 600Vac (225kW, 166kW, 150kW, and 125kW) or at 480Vac (200kW and 175kW).

Please refer to the specific XGI 1500 inverter manual for important information. Solectria XGI 1500 inverter manuals can be accessed at: www.solectria.com/downloads.

- AC Combiner

The AC Combiner provides fused terminations for the Solectria XGI 1500 inverter AC output and a load-break disconnect for the bussed AC output. The AC Combiner does not include ground-fault-protection (GFP) equipment. All AC Combiners are customized with customer-specified and project-specific details.

AC Combiners are customized for every **POWERRACK** project. For the details on a project-specific AC Combiner, please contact: appeng@solectria.com.

- Rack

The custom-fabricated rack features rugged, U.S.-sourced steel with a durable welded construction and a sleek black finish.

For the detailed mechanical drawings for a specific **Solectria XGI 1500 POWERRACK**, please contact: appeng@solectria.com.

- Factory Assembly, Test & Quality Control

The **Solectria XGI 1500 POWERRACK** assembly takes place in a controlled environment. The welded steel rack has a black painted finish, with XGI 1500 inverters mounted along the sides. The AC combiner is secured at one end of the rack, and the AC output wiring from each XGI 1500 inverter runs into and terminates in the AC Combiner. Communications Ethernet wiring connects the XGI 1500 inverters to a communications enclosure at one end of the **POWERRACK** for field connections. The POWERRACK undergoes quality inspections and test to ensure its readiness for shipment to the site.

POWERRACK Electrical Specifications

Electrical Specifications of the **POWERRACKS** are shown in the table. Note that the DC Input section specifications are per inverter, and the AC Output specifications are for the combined AC output.

SOLECTRIA® XGI 1500 PowerRack SPECIFICATIONS				
PowerRack Models	PowerRack Model	XGI 1500-250-PRU-2	XGI 1500-250-PRU-3	XGI 1500-250-PRU-4
	Number of Inverters and Inverter Model	(2) XGI 1500-250/250-600	(3) XGI 1500-250/250-600	(4) XGI 1500-250/250-600
	PowerRack Model	XGI 1500-250D-PR-2	XGI 1500-250D-PR-3	XGI 1500-250D-PR-4
	Number of Inverters and Inverter Model	(2) XGI 1500-250/250-600-DCG	(3) XGI 1500-250/250-600-DCG	(4) XGI 1500-250/250-600-DCG
Configuration	DC Input to Inverters (field wired)	See SOLECTRIA® XGI 1500 PV COMBINERS datasheet for details on PV Combiner models		
	AC Connections	Inverter Output Circuits factory-wired to the AC Combiner; Combined AC output available for field wiring		
DC Input (All specs are Per Inverter)	Absolute Max DC Input Voltage	1500 Vdc		
	Full Power Voltage Range (MPPT)	860 Vdc - 1250 Vdc		
	Operating Voltage Range (MPPT)	860 Vdc - 1450 Vdc		
	Number of MPP Trackers	Single MPPT Zone (per XGI 1500-250 Inverter)		
	Max Operating PV Current	296.7 Adc (per XGI 1500-250 Inverter)		
	Max Operating PV Power	255 kWdc (per XGI 1500-250 Inverter)		
	Max DC/AC Ratio Max Rated PV Power	2.0 500 kWdc (per XGI 1500-250 Inverter)		
	Max Rated PV Short-Circuit Current ($I_{sc} \times 1.25$)	800 Adc (per XGI 1500-250 Inverter)		
AC Output (All specs are for the combined AC Output)	Nominal AC Output Voltage (Range)	600 Vac, 3-Phase (-12% to +10%)		
	Continuous Real AC Output Power	0.5 MWac total	0.75 MWac total	1 MWac total
	Continuous Apparent Output Power	0.5 MVA total	0.75 MVA total	1 MVA total
	Maximum AC Output Current	481.2 A total	721.8 A total	962.4 A total
	Nominal Operating AC Frequency	60 Hz		
	Power Factor Adjustable Range (Unity default)	+/- 0.80 Adjustable		
	Total Harmonic Distortion (THD) @ Rated Power	< 5%		
	Grid Connection Type	3-Ph + N/GND		
	Fault Current Contribution (1 cycle RMS)	144 A (per XGI 1500-250 Inverter)		
*All specifications in these columns are based on the XGI 1500-250/250-600 (equivalently, the XGI 1500-250/250-600-DCG). Consult SOLECTRIA for more information and specifications for the PowerRack using other XGI 1500-250 series inverter models.				

SOLECTRIA® XGI 1500 PowerRack SPECIFICATIONS

PowerRack Models	PowerRack Model	XGI 1500-250-PRU-5	XGI 1500-250-PRU-6	XGI 1500-250-PRU-7	XGI 1500-250-PRU-8
		Number of Inverters and Inverter Model	(5) XGI 1500-250/250-600	(6) XGI 1500-250/250-600	(7) XGI 1500-250/250-600
PowerRack Models	PowerRack Model	XGI 1500-250D-PR-5	XGI 1500-250D-PR-6	XGI 1500-250D-PR-7	XGI 1500-250D-PR-8
		Number of Inverters and Inverter Model	(5) XGI 1500-250/250-600-DCG	(6) XGI 1500-250/250-600-DCG	(7) XGI 1500-250/250-600-DCG
Configuration	DC Input to Inverters (field wired)	See SOLECTRIA® XGI 1500 PV COMBINERS datasheet for details on PV Combiner models			
	AC Connections	Inverter Output Circuits factory-wired to the AC Combiner; Combined AC output available for field wiring			
DC Input (All specs are Per Inverter)	Absolute Max DC Input Voltage	1500 Vdc			
	Full Power Voltage Range (MPPT)	860 Vdc - 1250 Vdc			
	Operating Voltage Range (MPPT)	860 Vdc - 1450 Vdc			
	Number of MPP Trackers	Single MPPT Zone (per XGI 1500-250 Inverter)			
	Max Operating PV Current	296.7 Adc (per XGI 1500-250 Inverter)			
	Max Operating PV Power	255 kWdc (per XGI 1500-250 Inverter)			
AC Output (All specs are for the combined AC Output)	Max DC/AC Ratio Max Rated PV Power	2.0 500 kWdc (per XGI 1500-250 Inverter)			
	Max Rated PV Short-Circuit Current (Σ Isc x 1.25)	800 Adc (per XGI 1500-250 Inverter)			
	Nominal AC Output Voltage (Range)	600 Vac, 3-Phase (-12% to +10%)			
	Continuous Real AC Output Power	1.25 MWac total	1.5 MWac total	1.75 MWac total	2.0 MWac total
	Continuous Apparent Output Power	1.25 MVA total	1.5 MVA total	1.75 MVA total	2.0 MVA total
	Maximum AC Output Current	1,203 A total	1,444 A total	1,684 A total	1,925 A total
AC Output (All specs are for the combined AC Output)	Nominal Operating AC Frequency	60 Hz			
	Power Factor Adjustable Range (Unity default)	+/- 0.80 Adjustable			
	Total Harmonic Distortion (THD) @ Rated Power	< 5%			
	Grid Connection Type	3-Ph + N/GND			
	Fault Current Contribution (1 cycle RMS)	144 A (per XGI 1500-250 Inverter)			
	*All specifications in these columns are based on the XGI 1500-250/250-600 (equivalently, the XGI 1500-250/250-600-DCG). Consult SOLECTRIA for more information and specifications for the PowerRack using other XGI 1500-250 series inverter models.				

POWERRACK Factory Wiring

Fig. 1 illustrates the components and wiring of an 8-inverter **POWERRACK**, as an example. Note that the components and wiring are similar in all **POWERRACKS** utilizing the XGI 1500-250 series inverters.

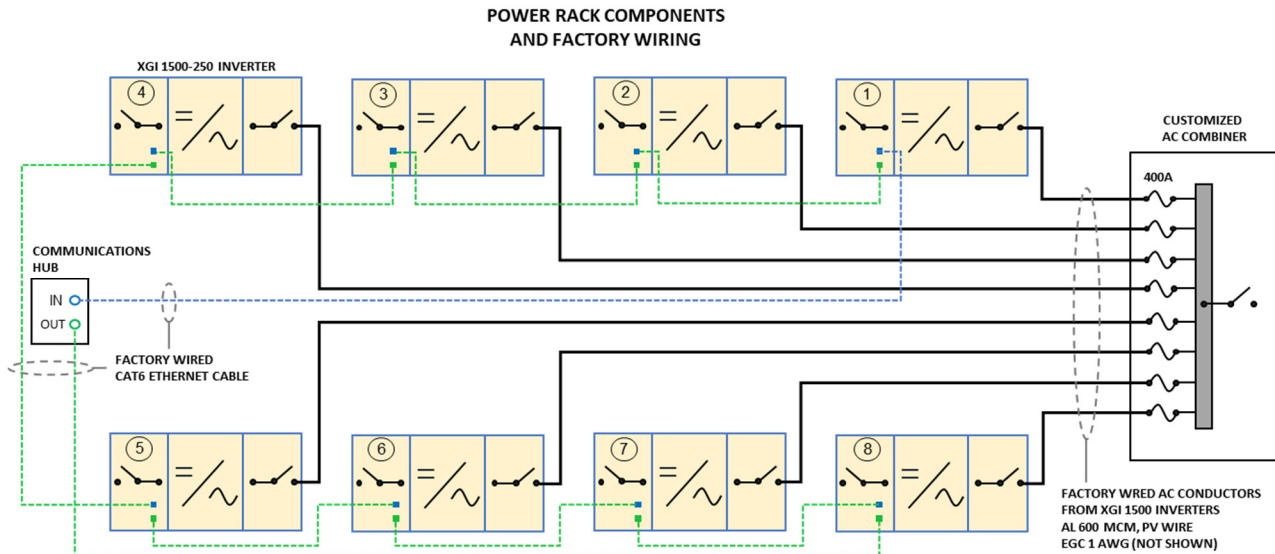


Fig. 1. Solectria **POWERRACK** Components and Factory Wiring*

POWERRACK Factory Wiring Details	
Description	Specifications
AC Conductors from the XGI 1500 inverters into the AC Combiner	Aluminum 600 MCM, PV Cable, 90C
AC Conductor markings	Phase conductors identified with colored tape
Equipment ground	#1 AWG, Cu
Communications cable run between XGI 1500 inverters and to the Communications hub enclosure	Ethernet, CAT6

*Fig.1. represents the PowerRack, version 3.0 (2026)

AC Combiner Specifications

The **POWERACKS** come pre-wired. Conductors are installed from the AC output terminals of each XGI 1500 inverter into the fuse terminals in the AC Combiner. After the overcurrent protection, the conductors are bussed and an AC disconnect switch provides the AC output terminals for the AC combiner.

Note: The specifications for the AC Combiner are project-specific. To review the specs for a particular AC Combiner, refer to either the original quotation from Yaskawa Solectria Solar, or the purchase order issued for the **POWERACK**. You may also inquire at appeng@solectria.com.

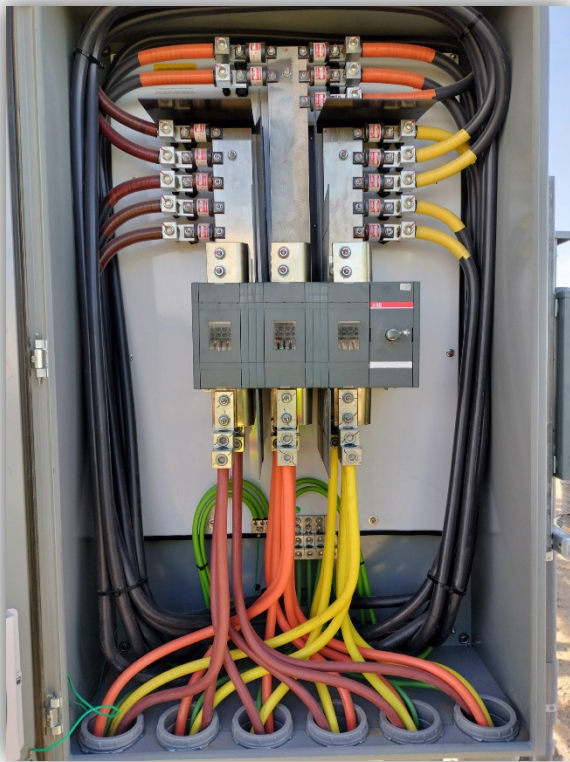


Fig. 2. An example AC Combiner wired on a **POWERACK**

AC COMBINER SPECIFICATIONS (EXAMPLE)	
Number of XGI 1500-250 Inverters	5
Overall	
Rated AC Voltage	600 VAC
Listing	UL-508A
Output Lug Rating	1600 A
Short-Circuit Current Rating (SCCR)	65 kA
Enclosure	
Dimensions	72" x 36" x 16"
Rating	NEMA-4
Material & Finish	Powder-coated steel
AC Disconnect	
Rating	1600A
Description	load-break w/external handle
AC Fuses	
Quantity	15
Rating	400A
Input Terminals	
Number of Terminal Sets	3 Sets (L 1, L2, L3)
Inputs per Terminal Set	5 Inputs each
Conductor Qty & Size	1 x #2 AWG - 600 MCM
Terminal Description	Mechanical lug
Output Terminals	
Number of Terminal Sets	3 sets (L 1, L2, L3)
Inputs per Terminal Set	1 Input each
Conductor Qty & Size	4 x #2 AWG - 600 MCM
Terminal Description	Mechanical lug
Neutral Input Terminals	
Number of Terminal Sets	1 set
Inputs per Terminal Set	6 Inputs each
Conductor Qty & Size	1 x #6 AWG - 350 MCM
Terminal Description	Mechanical lug
Neutral Output Terminals	
Number of Terminal Sets	1 set
Inputs per Terminal Set	4 Inputs each
Conductor Qty & Size	4 x #2 AWG - 600 MCM
Terminal Description	Mechanical lug
Equipment Ground Terminals	
Conductor Qty & Size	6 x #14 - 2/0 6 x #6 - 350 MCM
Terminal Description	Mechanical lug
Auxiliary Power (Optional)	
AC Voltage	600 Vac
Fuse Rating	15 A
Conductor Qty & Size	#14 - 4 (Cu only)

Specifications for an example AC Combiner for five XGI 1500-250 inverters. Details will vary for project-specific requirements.

POWERACK Mechanical Specifications

Please contact: appeng@solectria.com for the mechanical CAD drawings (.dwg) of the specific **POWERACK** of interest. Also see the Mechanical Drawings section of this document.

The table below shows the overall dimensions and approximate weight of the **POWERACKS**.

POWER RACK OVERALL DIMENSIONS AND WEIGHT				
PowerRack Model	Height	Length	Width	Weight
XGI-1500-250-PRU-2 or XGI-1500-250D-PR-2	7' - 0"	8' - 1"	7' - 2"	1,800 lbs
XGI-1500-250-PRU-3 or XGI-1500-250D-PR-3	8' - 0"	12' - 10"	7' - 2"	2,000 lbs
XGI-1500-250-PRU-4 or XGI-1500-250D-PR-4	8' - 0"	12' - 10"	7' - 2"	2,300 lbs
XGI-1500-250-PRU-5 or XGI-1500-250D-PR-5	8' - 0"	18' - 6"	7' - 2"	3,000 lbs
XGI-1500-250-PRU-6 or XGI-1500-250D-PR-6	8' - 0"	18' - 6"	7' - 2"	3,300 lbs
XGI-1500-250-PRU-7 or XGI-1500-250D-PR-7	8' - 0"	24' - 2"	7' - 2"	3,700 lbs
XGI-1500-250-PRU-8 or XGI-1500-250D-PR-8	8' - 0"	24' - 2"	7' - 2"	4,000 lbs

POWERACK Hoisting Instructions

When removing the **POWERACK** from a flatbed in the field, please note the following instructions.

Basic Steps

- Develop an effective plan for the equipment receiving, hoisting and placement of the equipment by a qualified hoisting service provider.
- Do prep work
- Understand the payload Select the rigging gear
- Inspect all rigging gear
- Assign responsibilities
- Attach the rigging gear to the payload
- Attach payload to a load hook
- Move the payload
- Secure the payload
- Detach the payload from a hook
- Remove the rigging gear

During Hoisting:

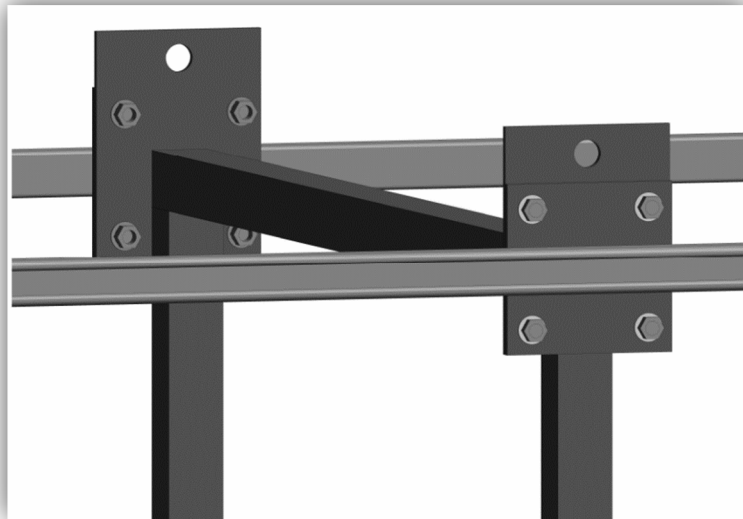


Fig. 3. Image and photo of the lifting eyes on the vertical elements of the **POWERACK**

- Ensure that all hoisting provisions provided are engaged to the slings, hooks and/or shackles when rigging the unit.
- Ensure safe and reliable connections of all slings, hooks and shackles.
- Ensure the connections of slings are all secure and reliable.
- The unit is heavier at the end of the AC Combiner; caution is recommended to ensure the load is balanced prior to lifting. The use of a spreader bar may assist in the hoisting operation; a qualified hoisting service provider should be utilized to perform a site-specific assessment for the operation.

- The unit should be hoisted vertically. Never drag the unit on the ground or handle the unit by any other means than the lifting provisions provided on the top of each leg or frame and never pull and push it on any surface.
- The unit should be placed lightly and smoothly minimizing the hidden stress that comes from sudden stops, or vibrations during movement that will shock the mechanical structure of the unit.
- The placement of the unit should be on a prepared level surface; setting the unit on uneven surfaces could compromise the structural integrity of the unit.
- Implement all necessary auxiliary measures to ensure the safe and smooth hoisting of the product.
- Avoid scratching the product during the hoisting and setting of the unit.

POWERRACK Startup Procedure

The **POWERRACK** comprises from two to eight XGI 1500 inverters. Startup for each inverter should follow the steps documented in the User's Manual for the specific XGI 1500 model.

Please refer to the *Startup and Verification Test* section of the specific XGI 1500 inverter manual. Solectria XGI 1500 inverter manuals are accessible online at: www.solectria.com/downloads.

POWERRACK Shutdown Procedure

To shut down the **POWERRACK** safely, follow this four-step basic procedure in the sequence presented:

1. First, turn the external AC switch on the AC Combiner to “OFF”. This removes AC power to all the XGI 1500 inverters on the **POWERRACK**. (Fig. 4)
2. Second, turn the red AC Disconnect switch on the right side of each XGI 1500 inverter to “OFF”. (Fig. 5.)



Fig. 4. AC Switch on AC Combiner

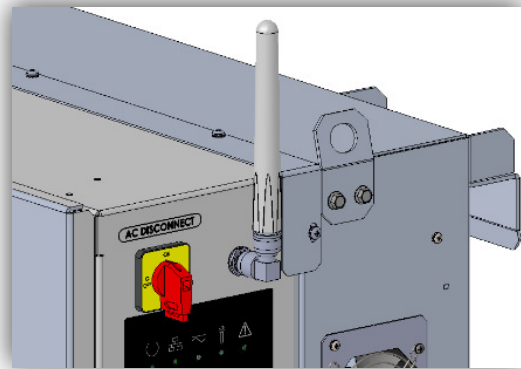


Fig. 5. AC Switch on XGI 1500

3. Third, turn the DC switch on the front of each XGI 1500 inverter to “OFF”. (Fig. 6.)
4. Last, turn the DC switches on all PV Combiners that source all XGI 1500 inverters to “OFF”. (Fig. 7.)



Fig. 6. DC Switch on XGI 1500 inverter



Fig. 7. DC Switch on PV Combiner

Switch Handle Position

Note the proper orientation of the switch handle (Fig. 8) for both “ON” (I) horizontal and “OFF” (O) vertical. The switch handle should not be left in any other orientation.

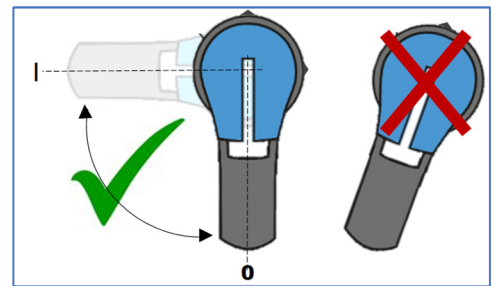


Fig. 8. Proper Alignment of Switch

Configuration with Low Grid SCR Values

For proper and trouble-free operation, the number of XGI 1500 inverters that can be connected to the grid at a single point of interconnection (POI) is limited in circumstances where the grid has a very low SCR value. At very low SCR values, resonance on the AC voltage waveform can occur, owing to the combination of the impedances of the inverters, transformer and grid. When sufficient AC voltage resonance occurs, the XGI 1500 inverter will detect the grid AC voltage as too high and will shut down safely. Field experience, analysis and laboratory testing have led to guidelines for proper configuration of XGI 1500 inverters with a common POI.

Refer to ***XGI 1500 Inverter Configuration Limits with Low Grid SCR Values***. This document provides tables that correspond to specific short-circuit ratio (SCR) scenarios, covering values from 2.0 to 6.0. and can be accessed online at www.solectria.com.

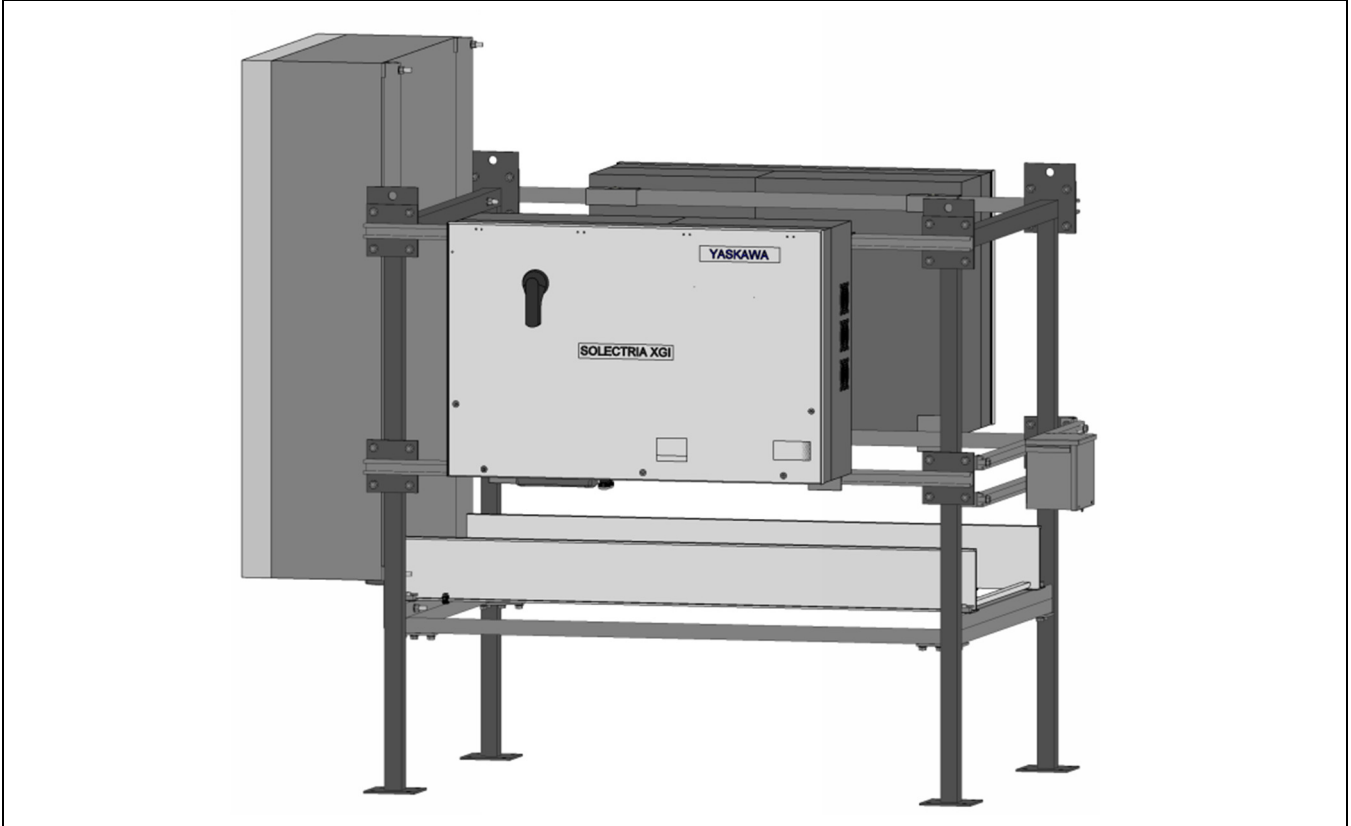
Mechanical Drawings

The following drawings illustrate the details of the **POWERACKS** of the different sizes. Note that the **POWERACKS** shown are the latest, modular, welded version 3.0 (5/2026). For a full set of drawings in pdf or dwg formats contact: appeng@solectria.com.

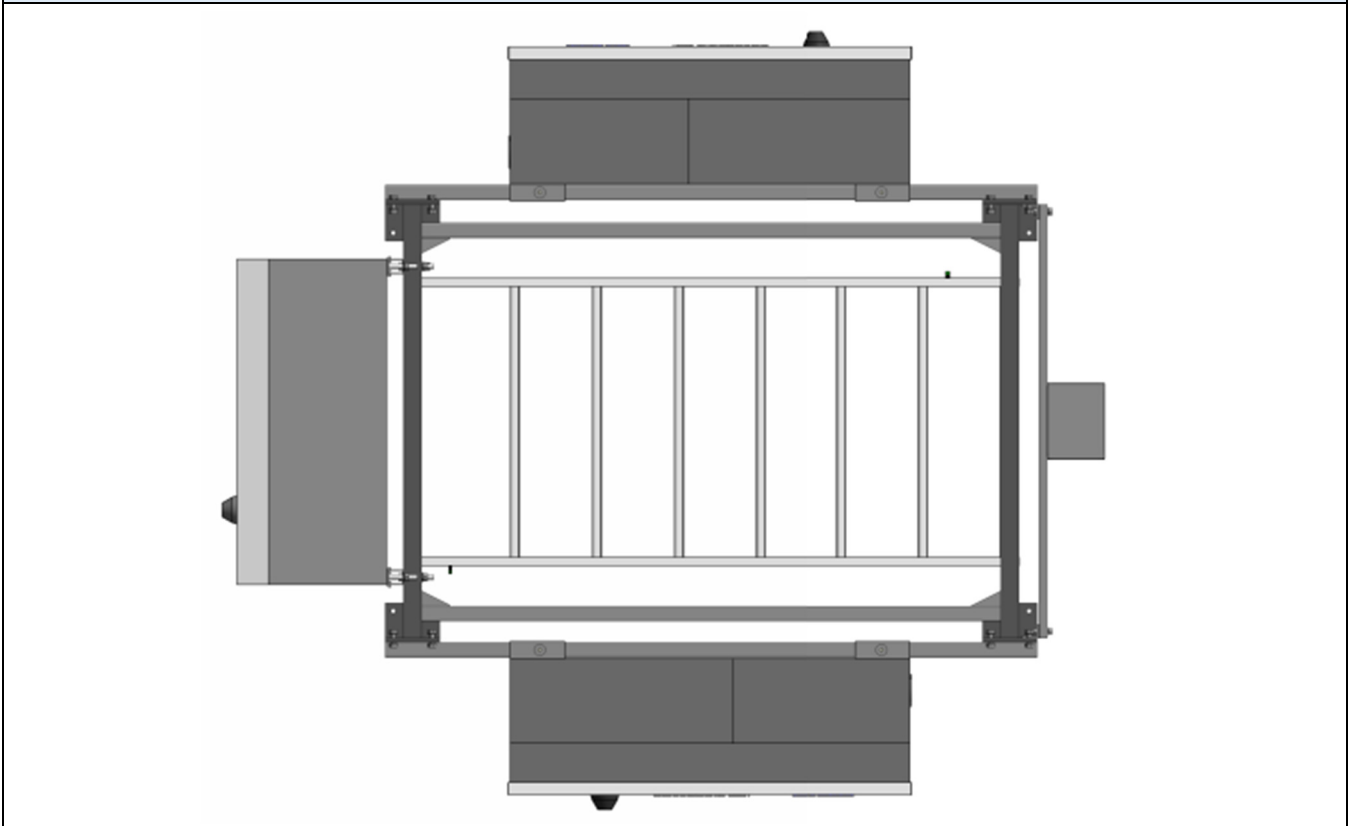
The **POWERACKS** can be placed on any suitably-prepared level ground. The details for ground preparation are site specific and should be designed by a qualified civil engineer. The details shown in the Mechanical Drawings that follow identify the location of wiring and mounting provisions, but do not specify the foundation itself.

Contact a qualified civil engineer to specify and design an appropriate foundation for the **POWERACK** for a given site.

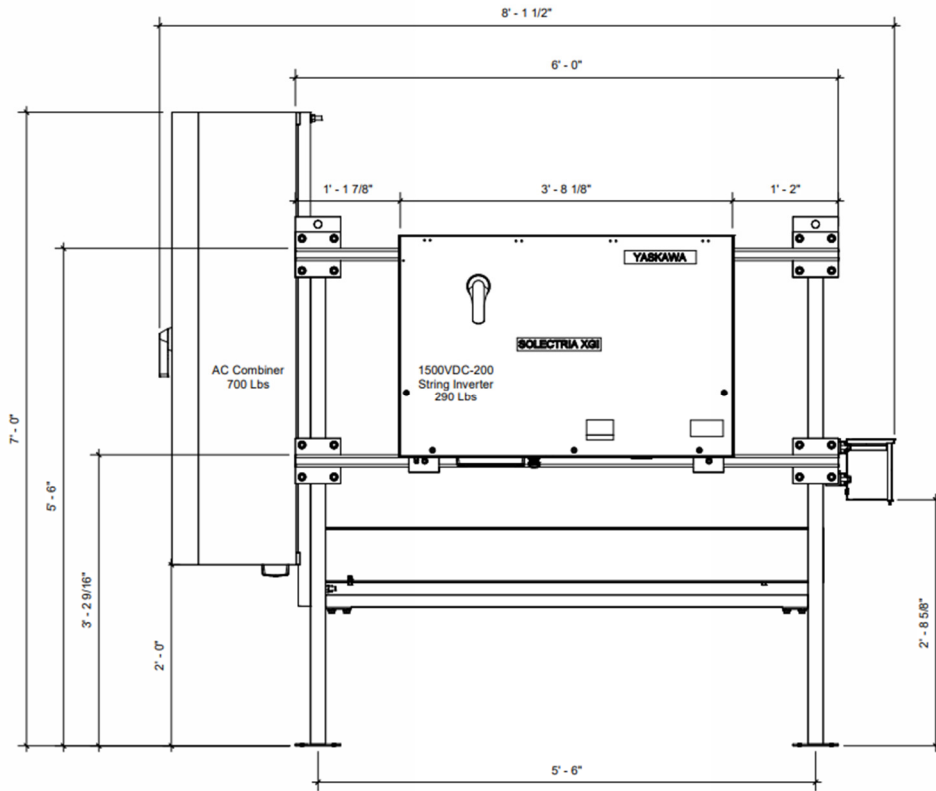
2-Inverter POWERACK Drawings



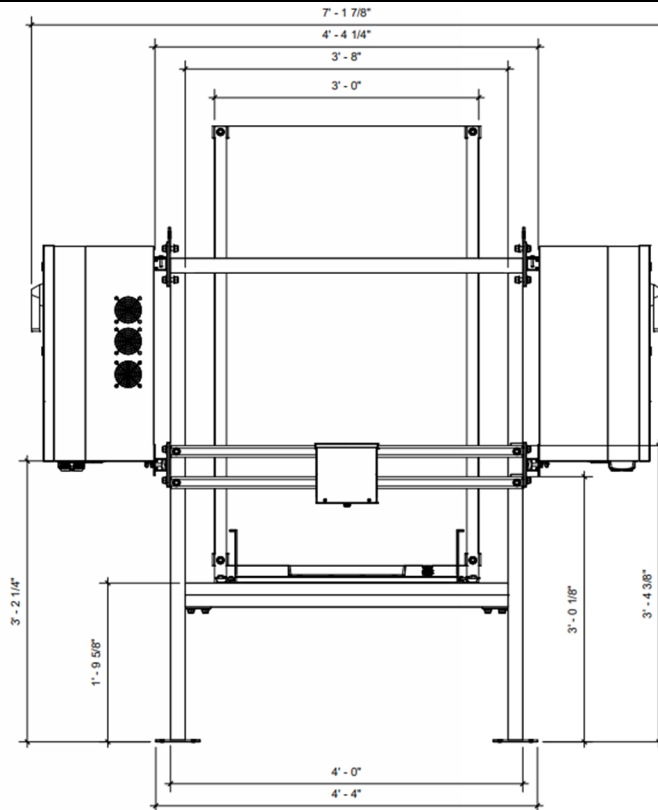
2-Inverter POWERACK: Isometric View



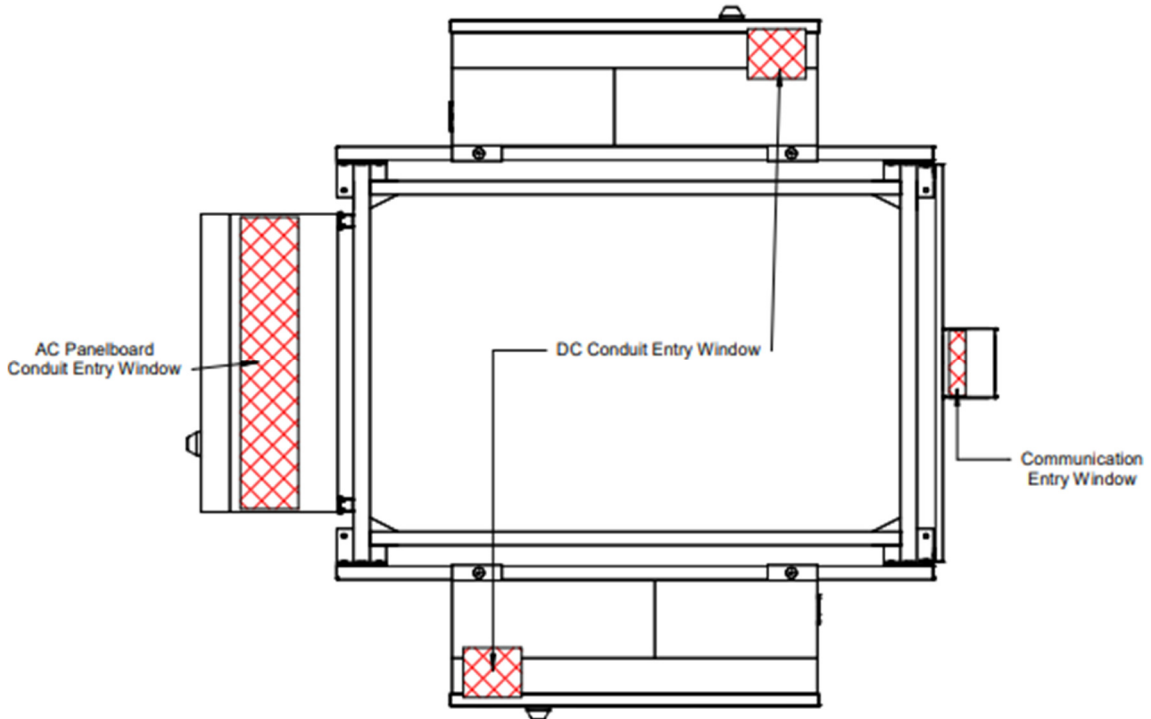
2-Inverter POWERACK: Plan View



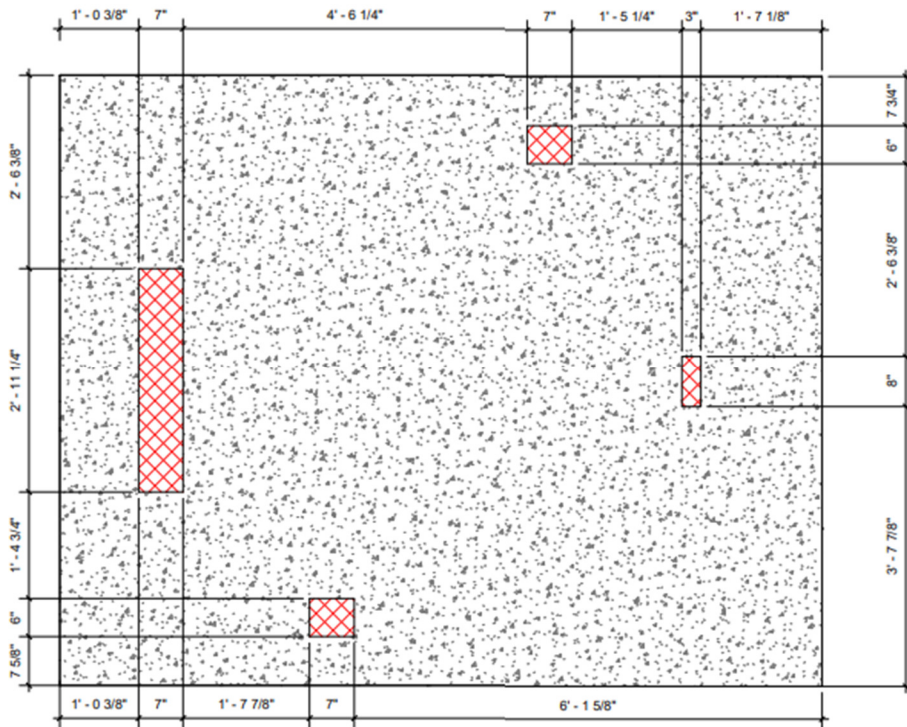
2-Inverter POWERACK: Side View



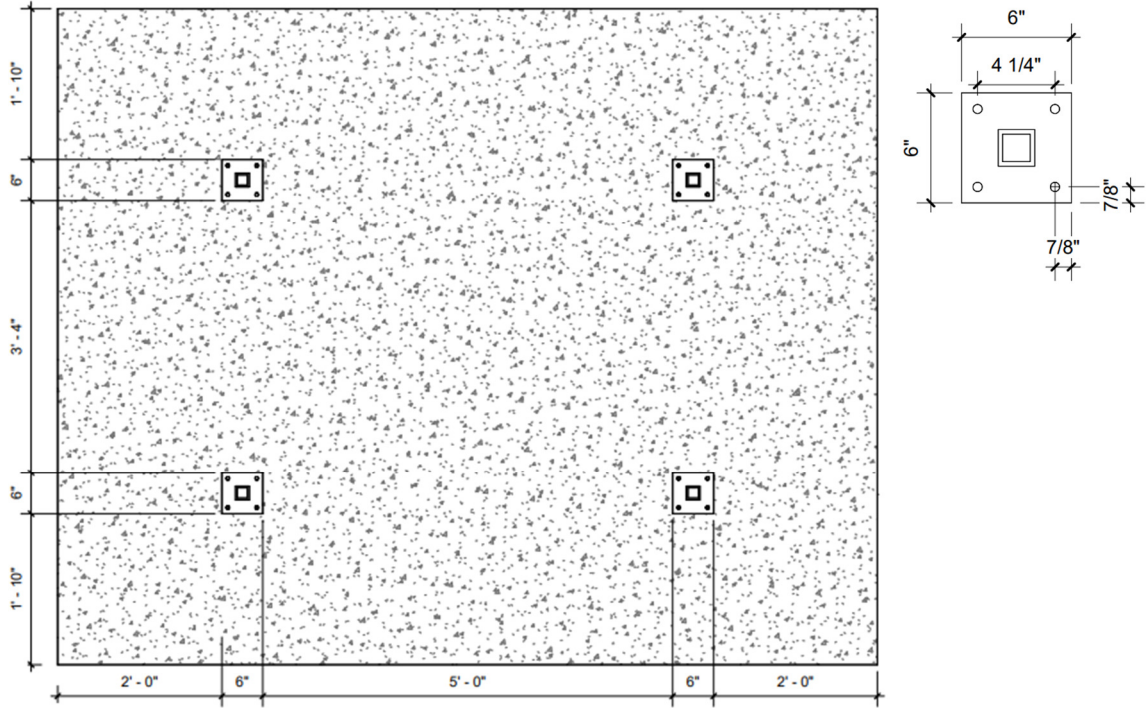
2-Inverter POWERACK: End View



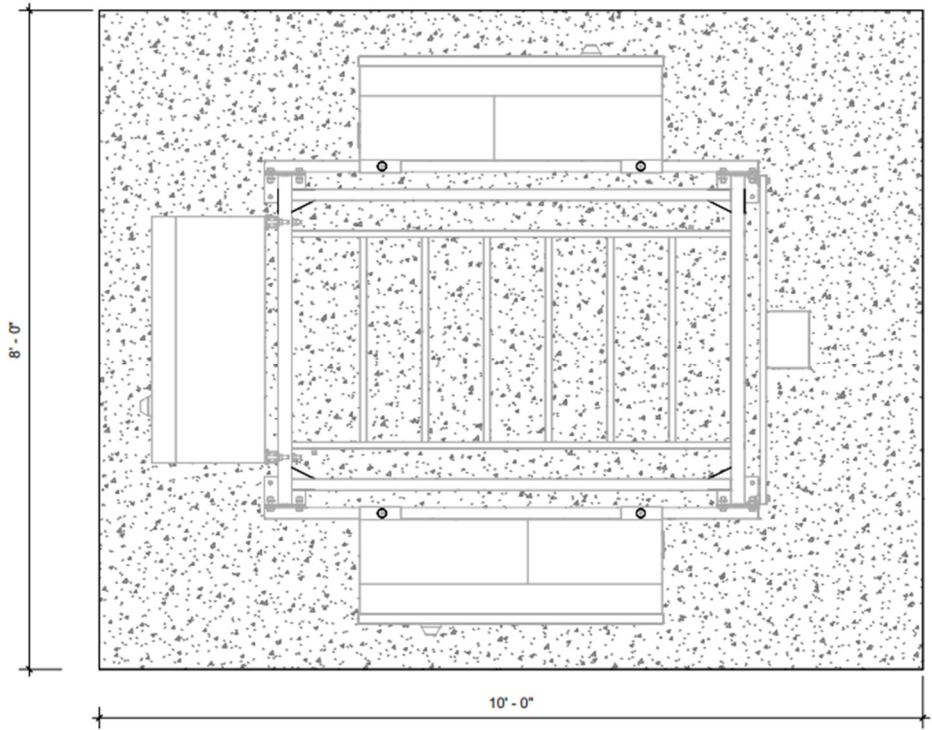
2-Inverter POWERACK: Conduit Entry Locations



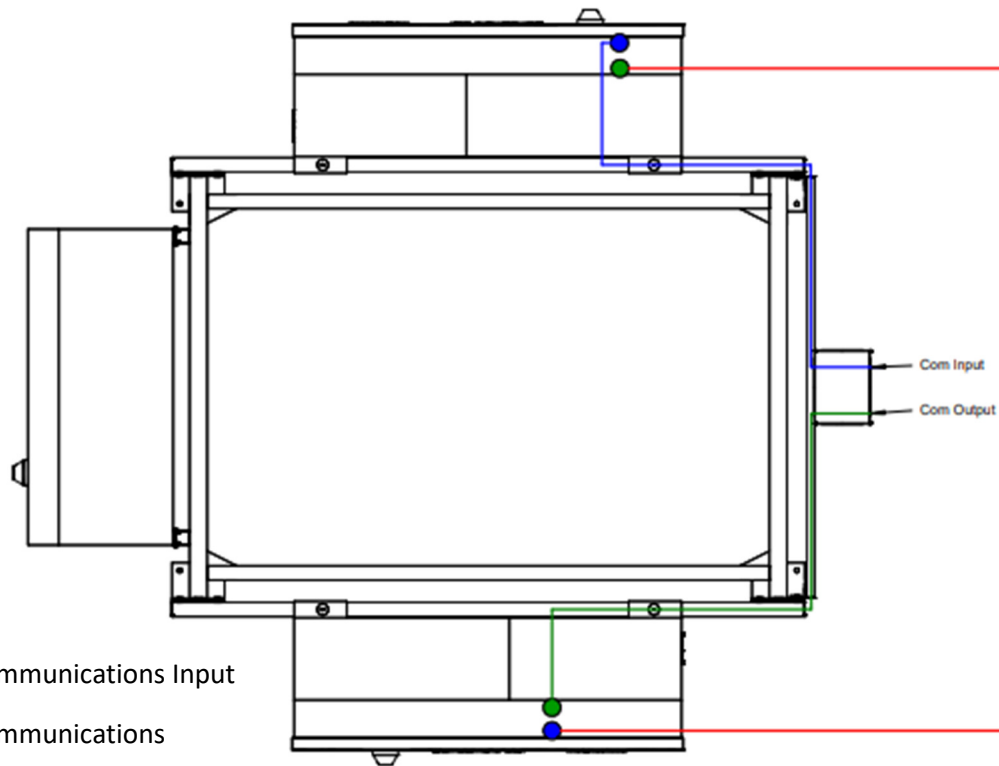
2-Inverter POWERACK: Pad Details



2-Inverter POWERACK: Anchoring Locations



2-Inverter POWERACK: Pad Details

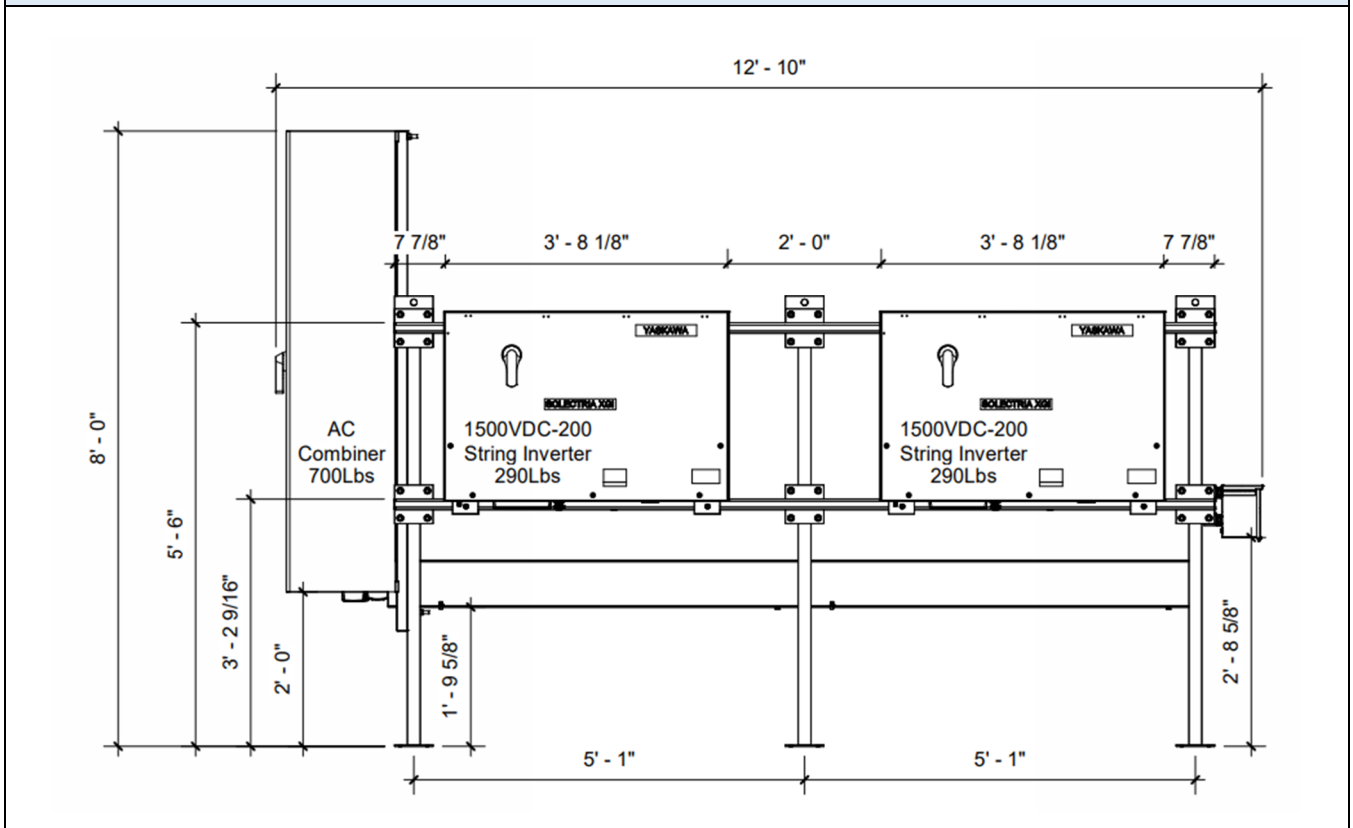


2-Inverter POWERACK: Communications Wiring

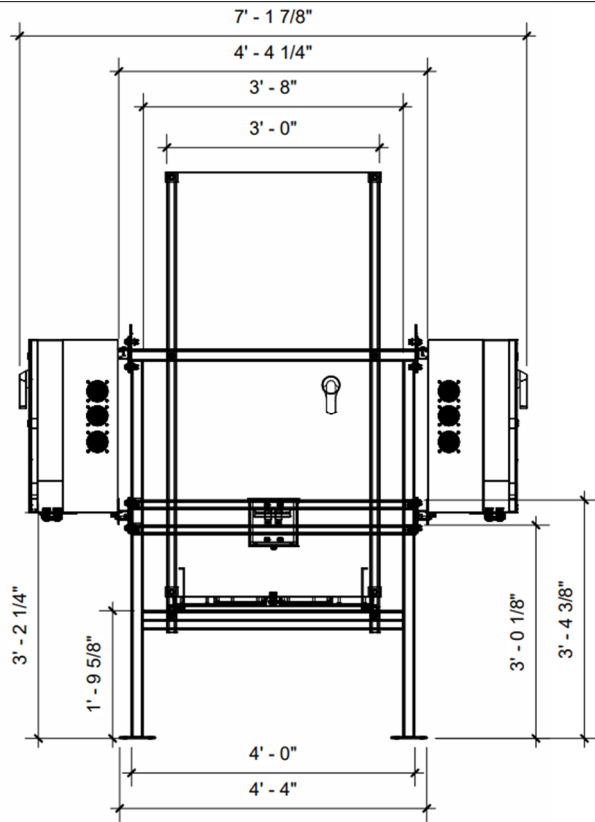
3-Inverter and 4-Inverter POWERACK Drawings



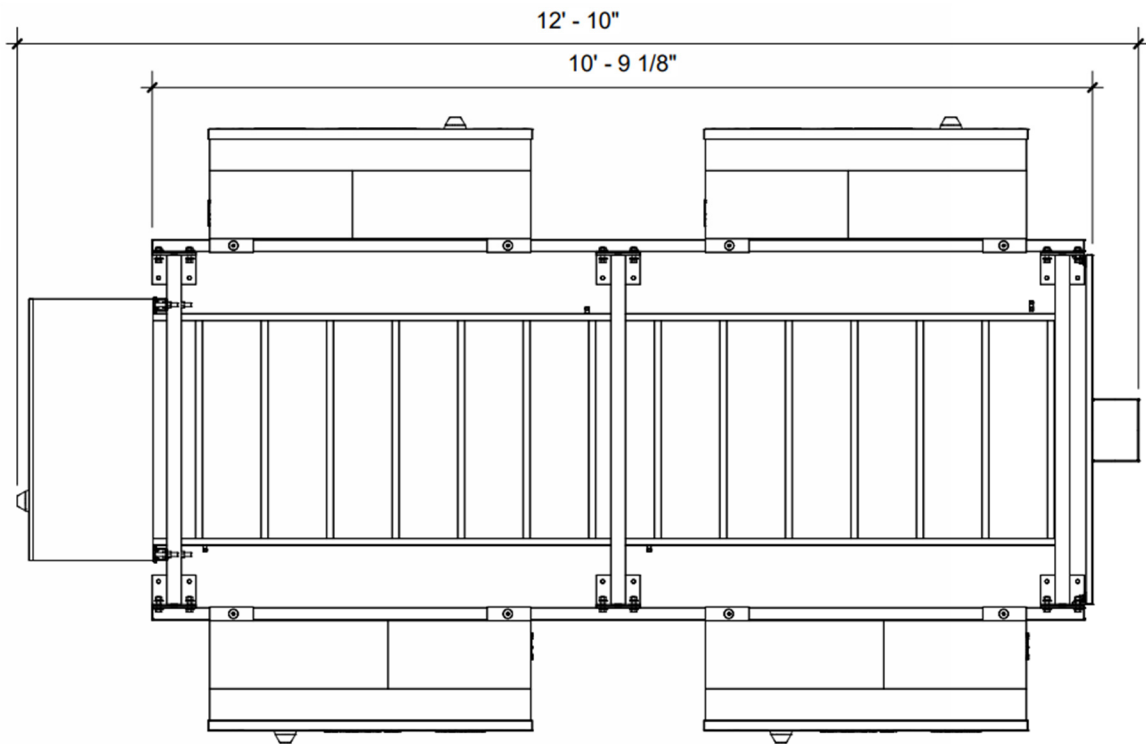
3-Inverter and 4-Inverter POWERACK: Isometric View



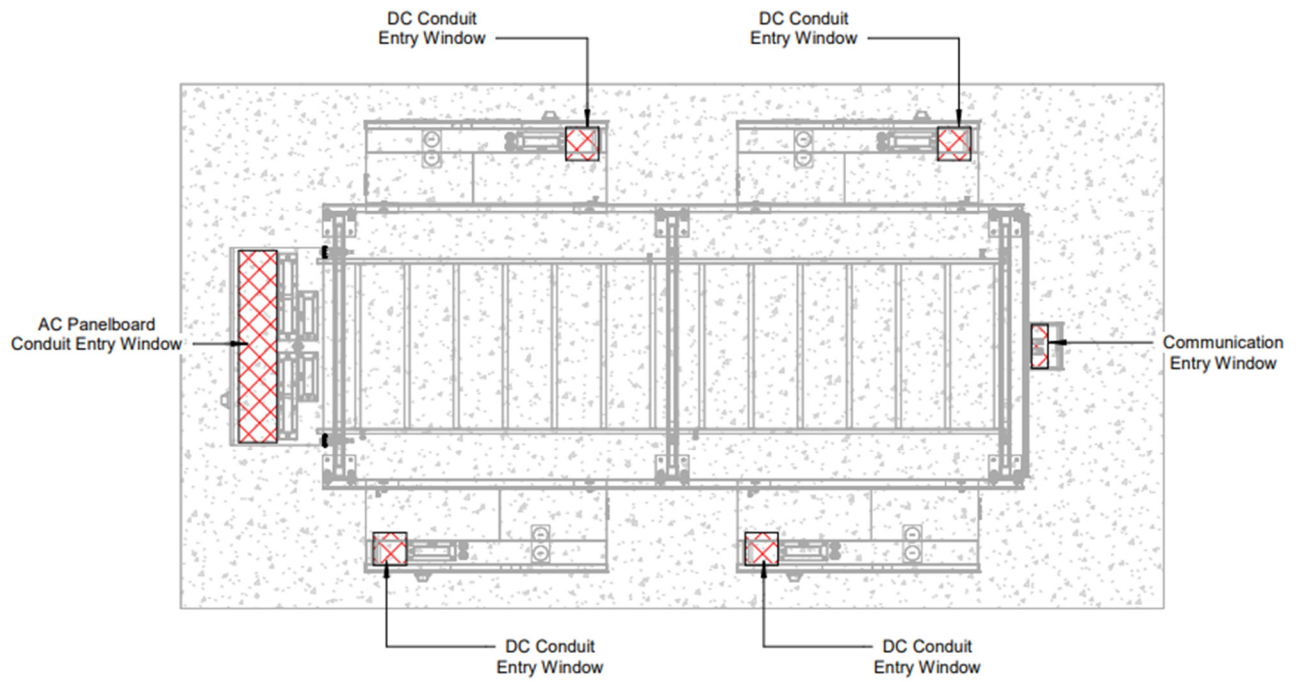
3-Inverter and 4-Inverter POWERACK: Side View



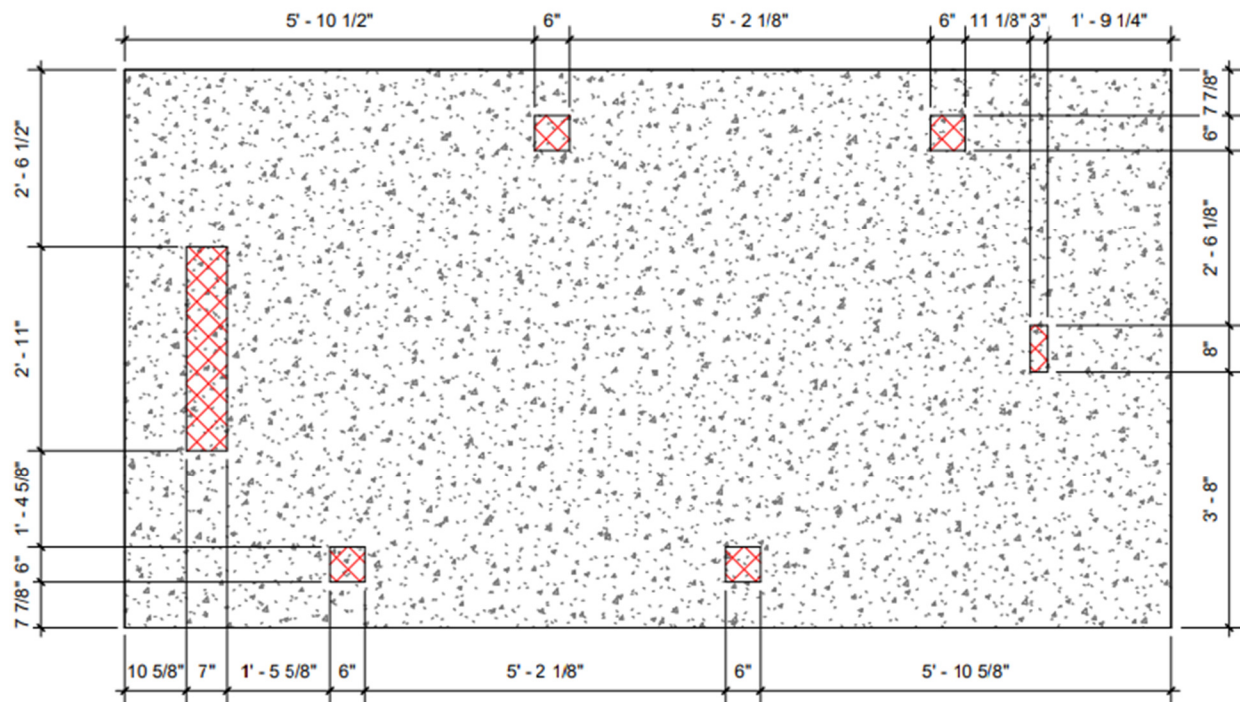
3-Inverter and 4-Inverter POWERACK: End View



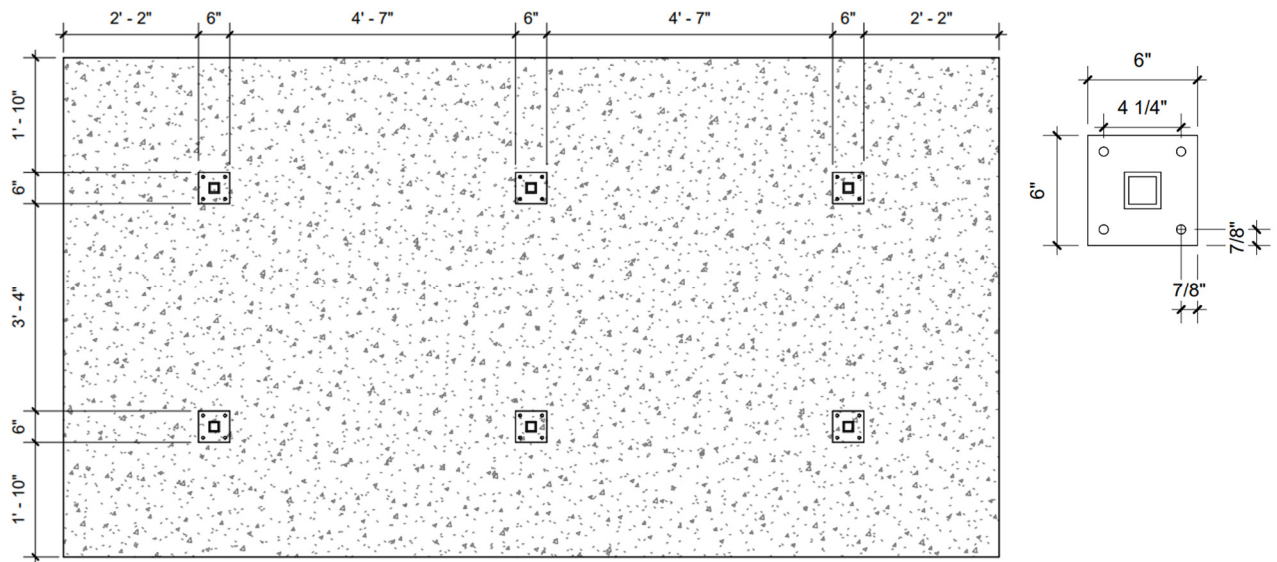
3-Inverter and 4-Inverter POWERACK: Plan View



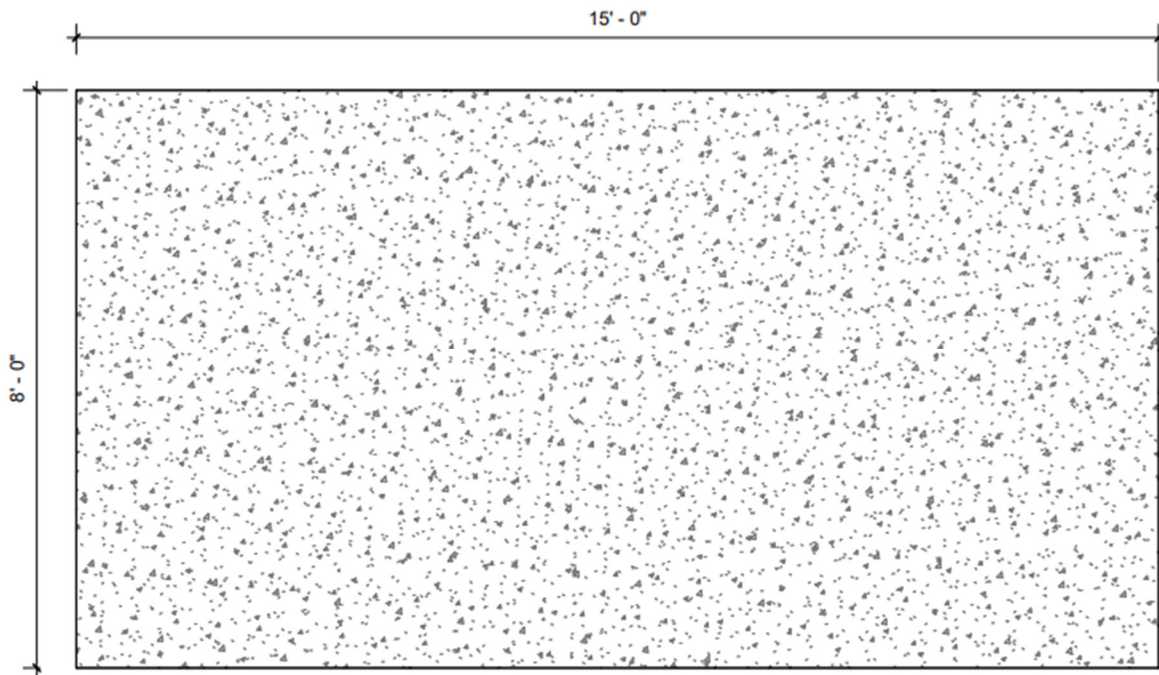
3-Inverter and 4-Inverter POWERACK: Conduit Entry Locations



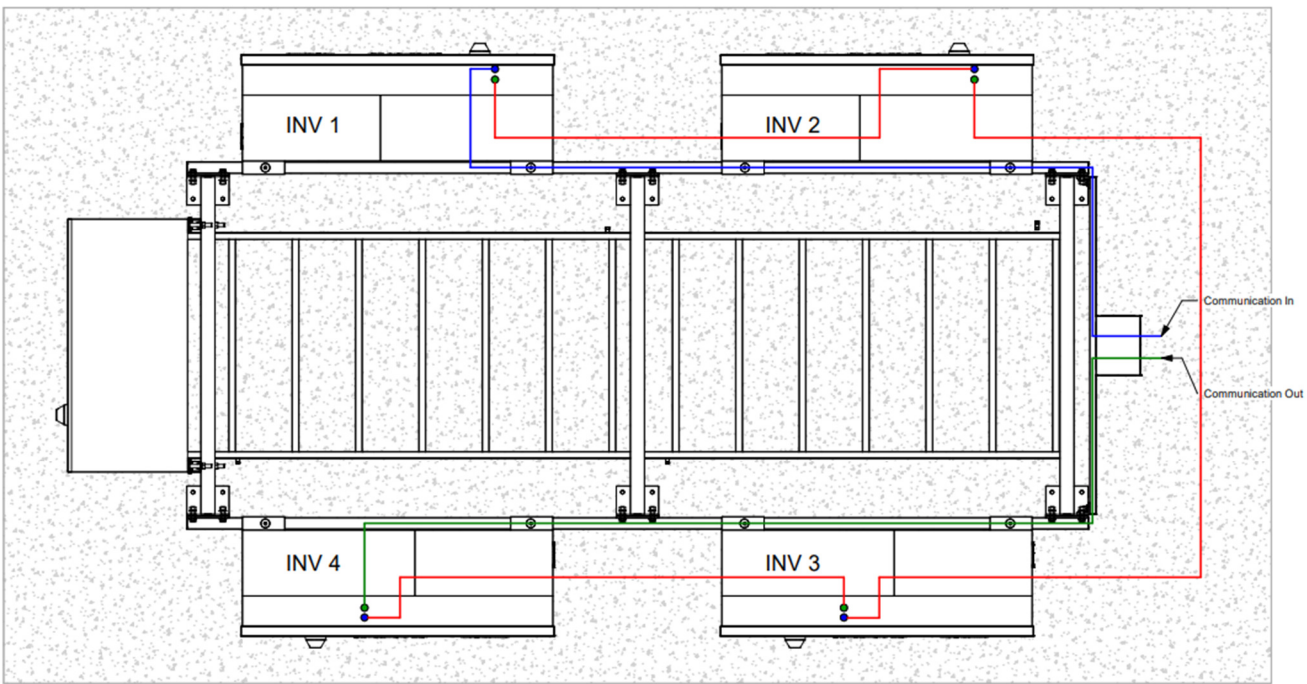
3-Inverter and 4-Inverter POWERACK: Boxout Locations



3-Inverter and 4-Inverter POWERACK: Anchoring Locations



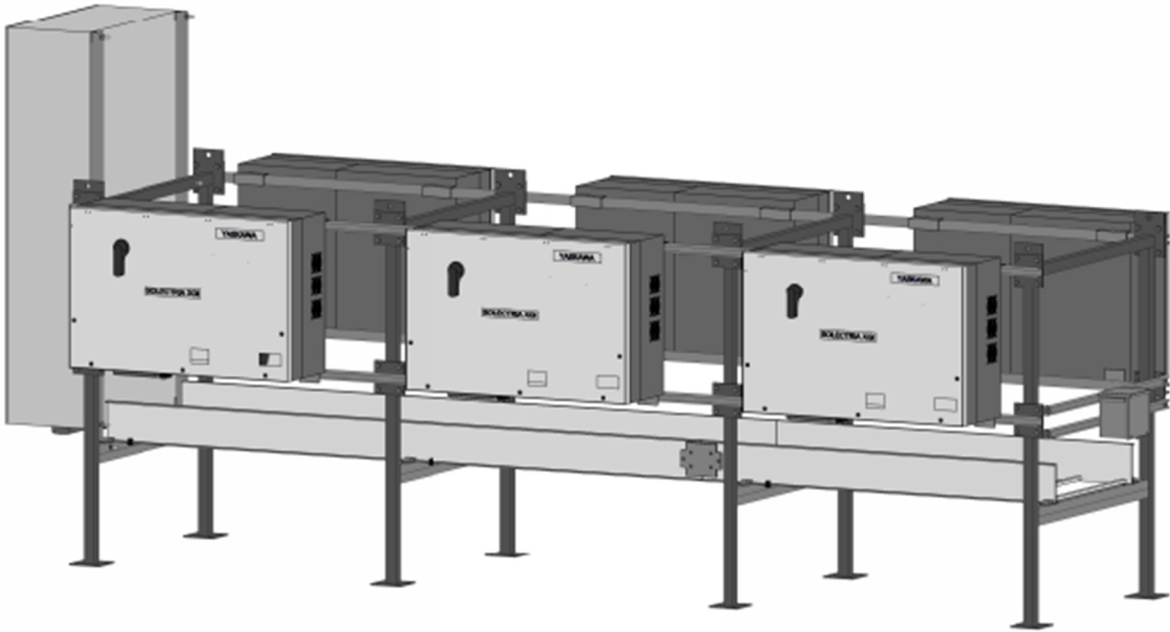
3-Inverter and 4-Inverter POWERACK: Recommended Pad Dimensions



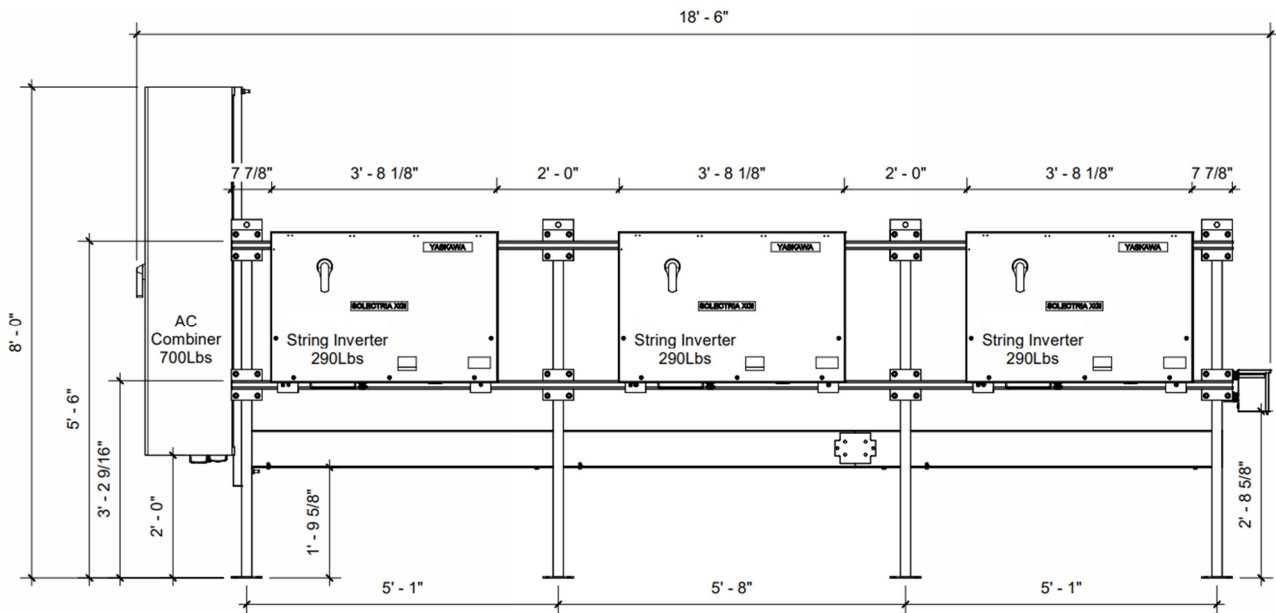
- Communications Input
- Communications Output

3-Inverter and 4-Inverter POWERACK: Communications Wiring

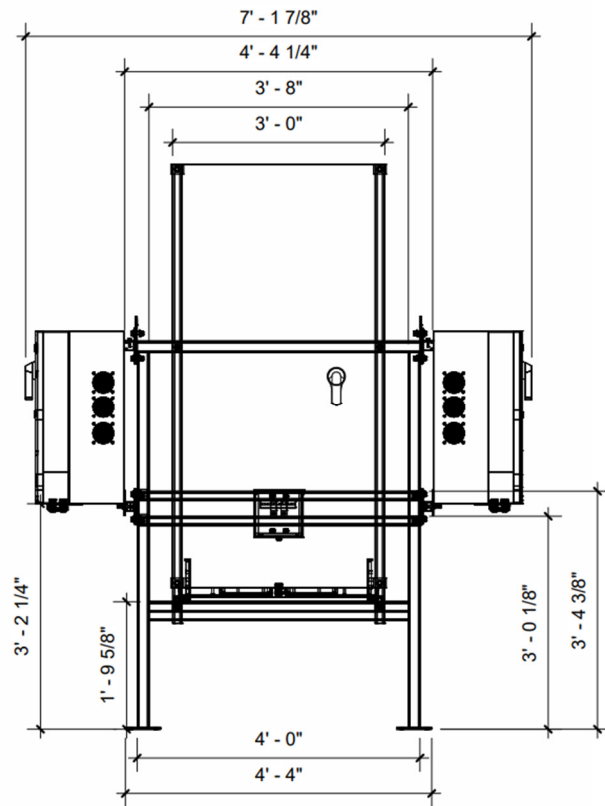
5-Inverter and 6-Inverter POWERACK Drawings



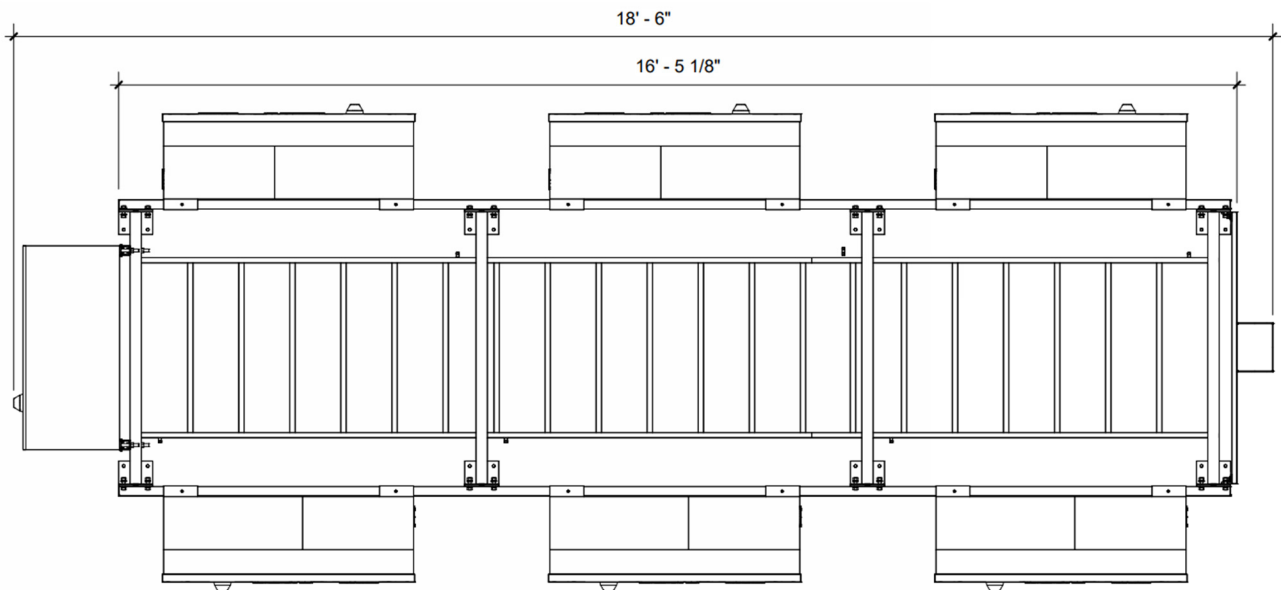
5-Inverter and 6-Inverter POWERACK: Isometric View



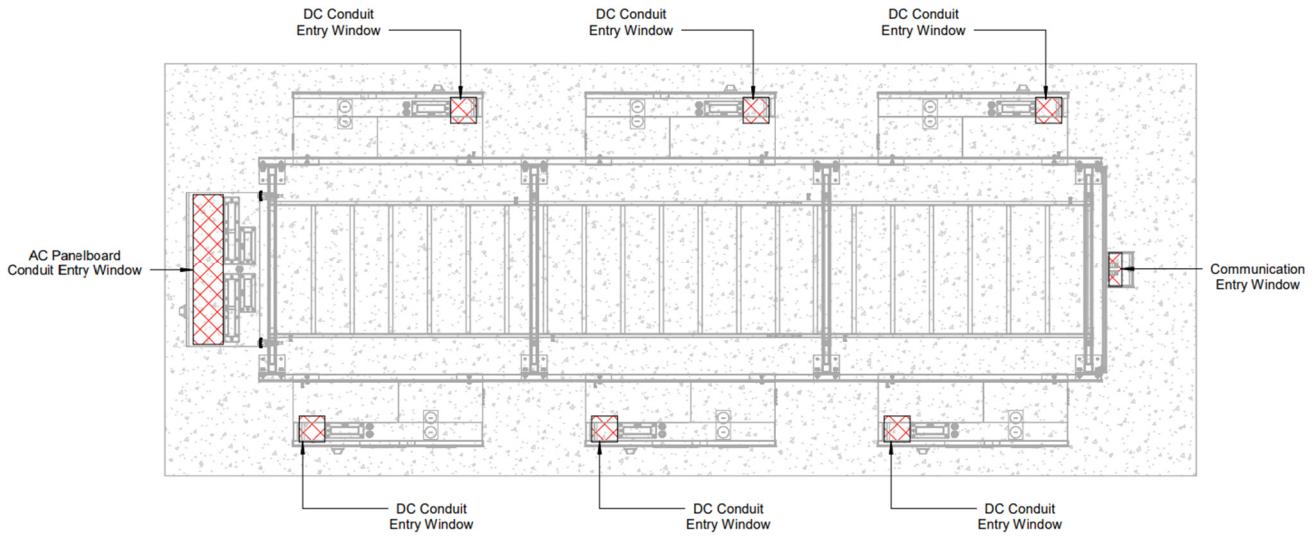
5-Inverter and 6-Inverter POWERACK: Side View



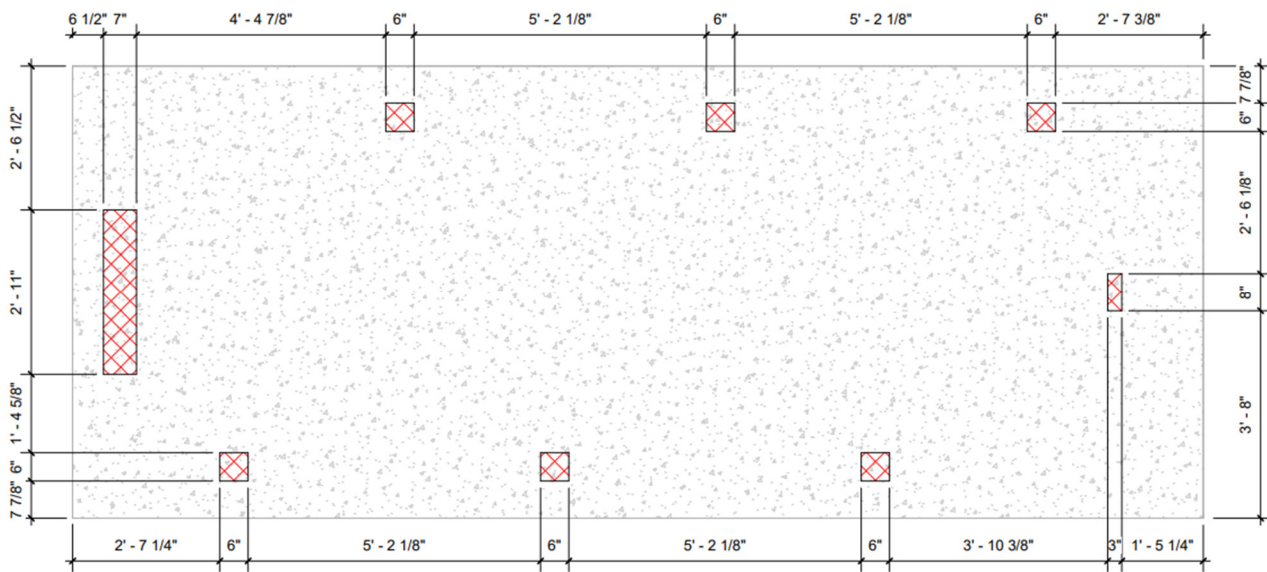
5-Inverter and 6-Inverter POWERRACK: End View



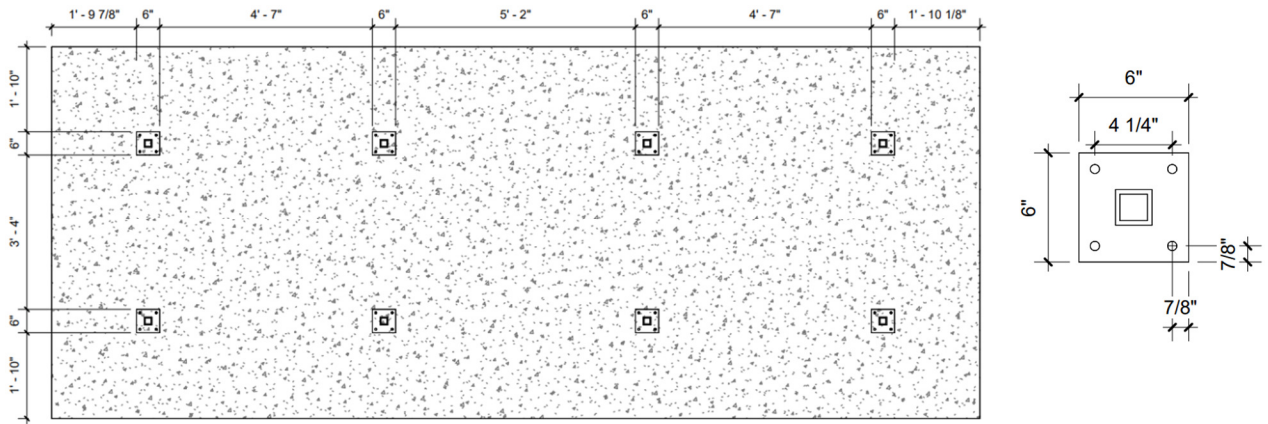
5-Inverter and 6-Inverter POWERRACK: Plan View



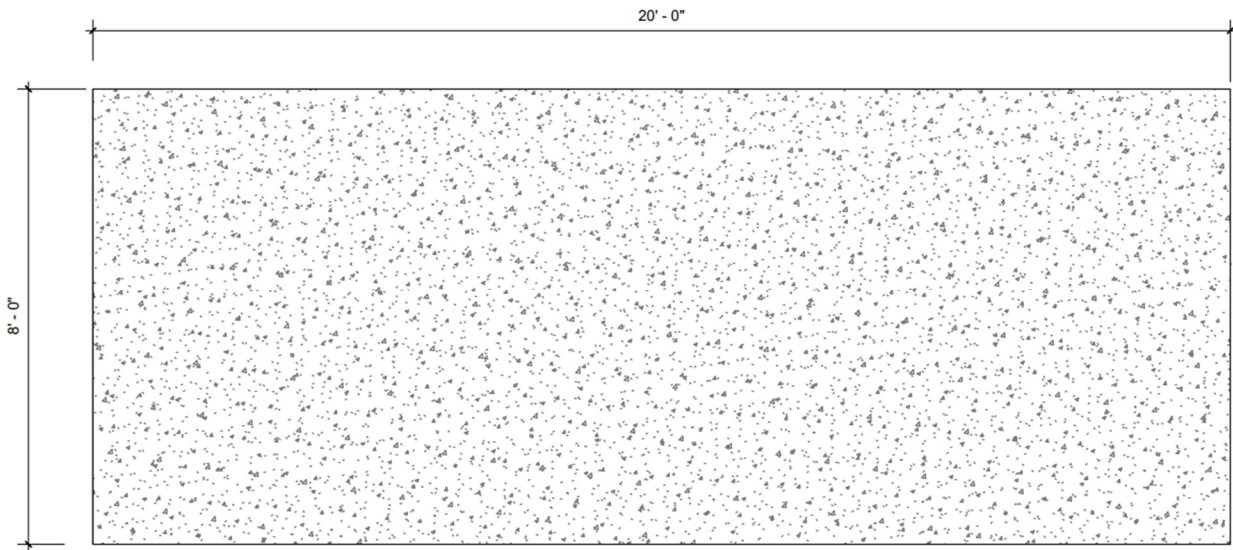
5-Inverter and 6-Inverter POWERRACK: Conduit Entry Locations



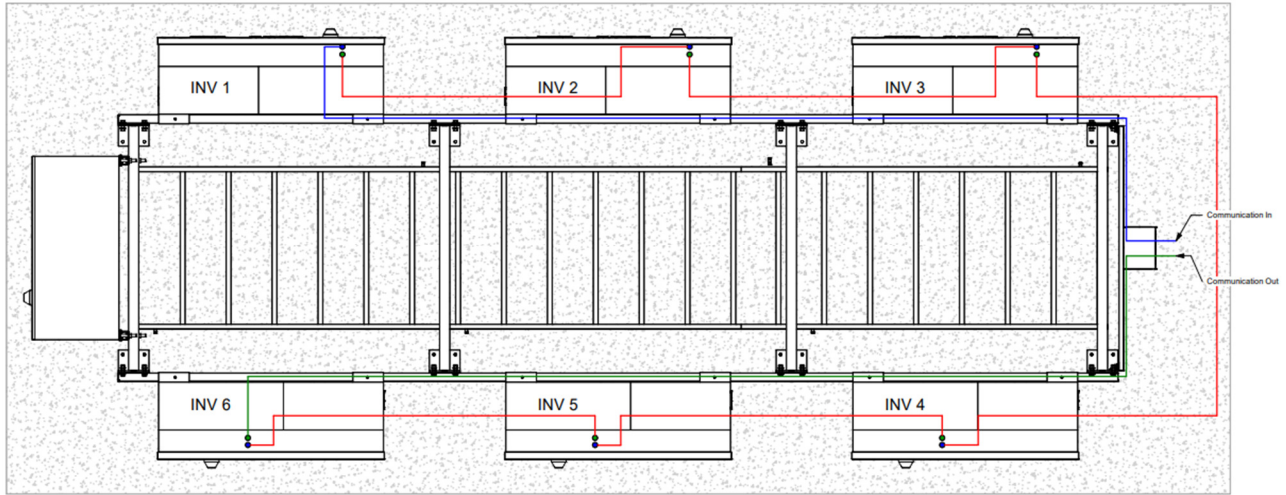
5-Inverter and 6-Inverter POWERRACK: Boxout Locations



5-Inverter and 6-Inverter POWERACK: Anchoring Locations



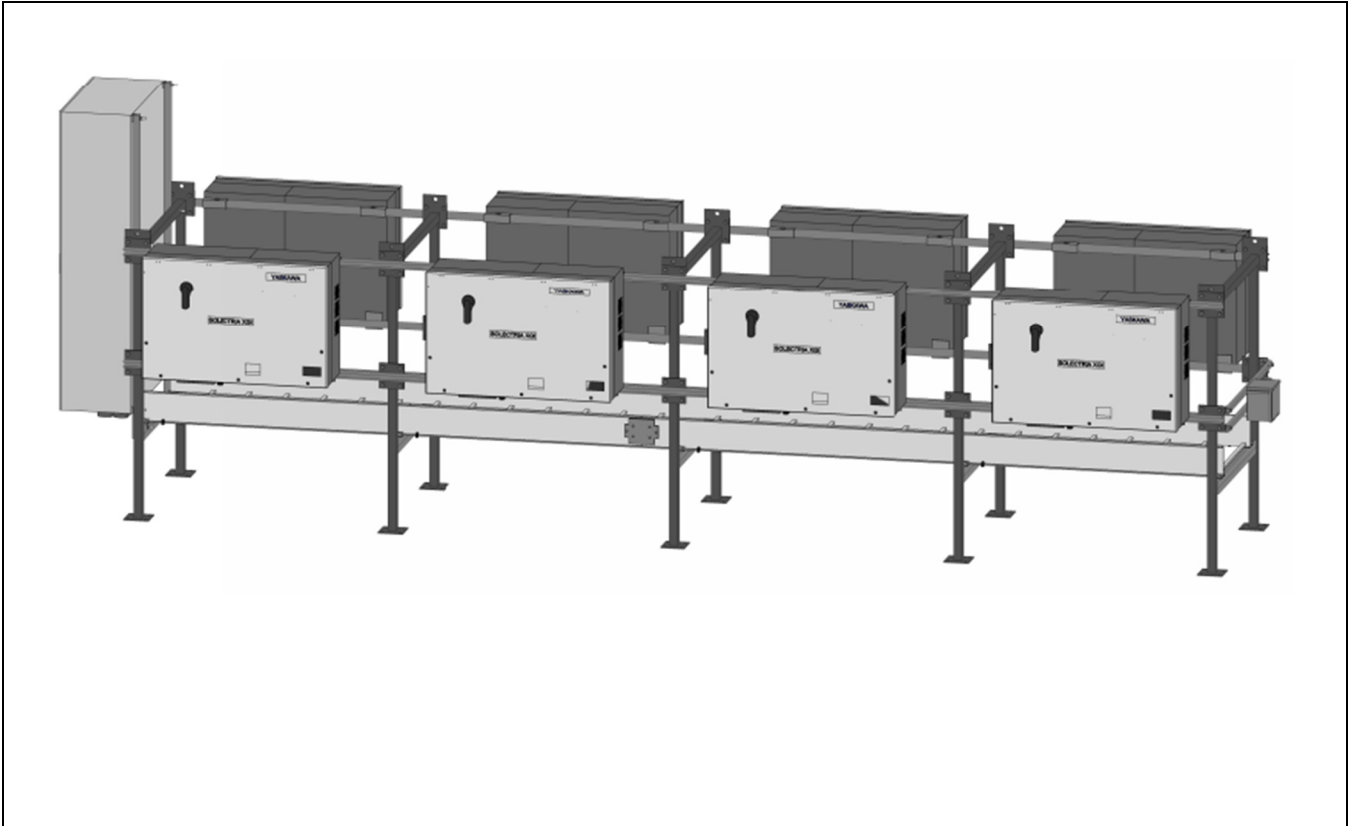
5-Inverter and 6-Inverter POWERACK: Recommended Pad Dimensions



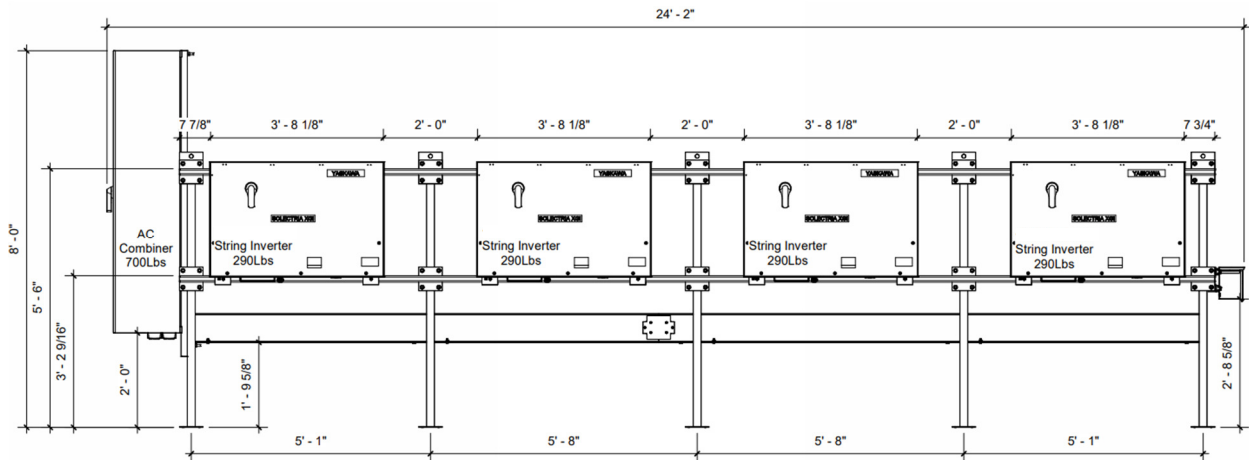
- Communications Input
- Communications Output

5-Inverter and 6-Inverter POWERACK: Communications Wiring

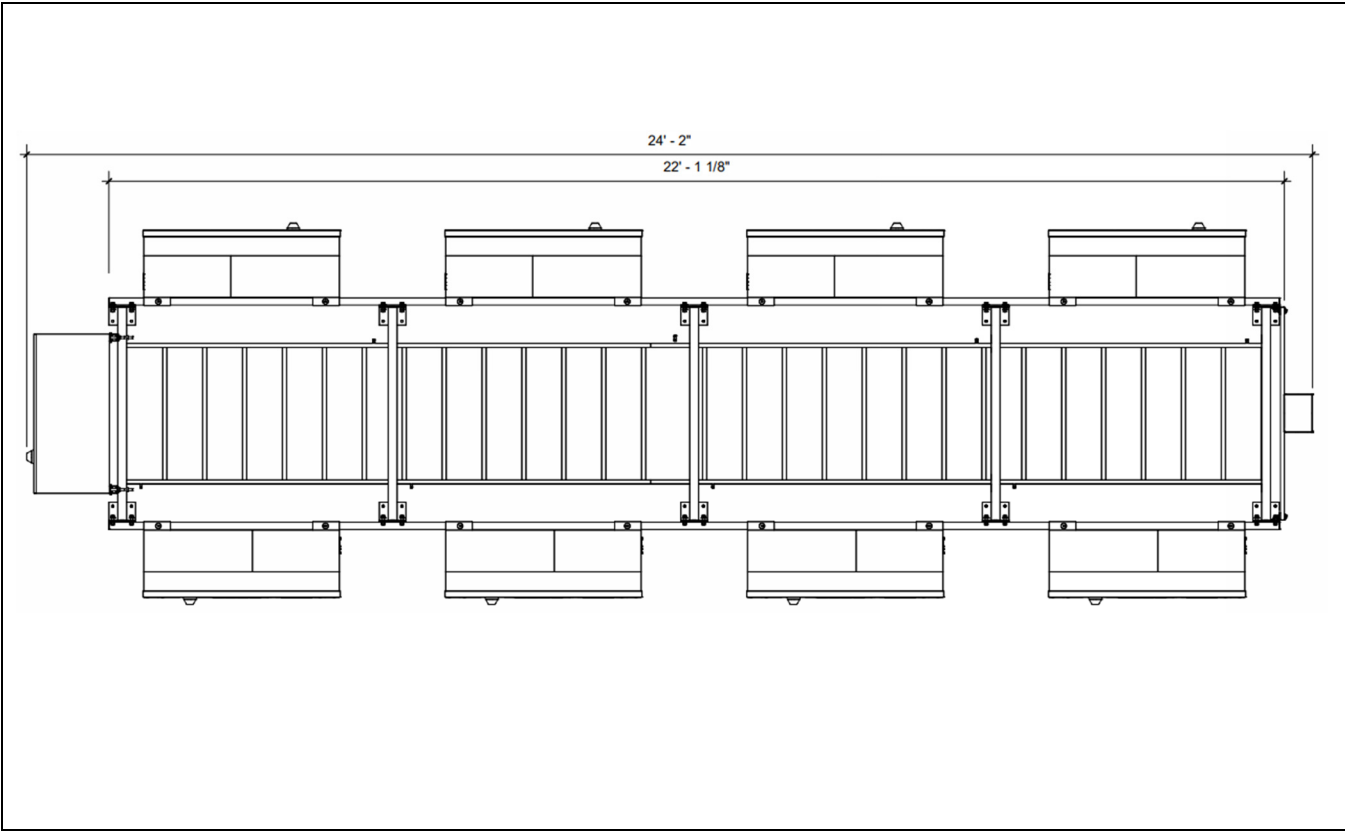
7-Inverter and 8-Inverter POWERACK Drawings



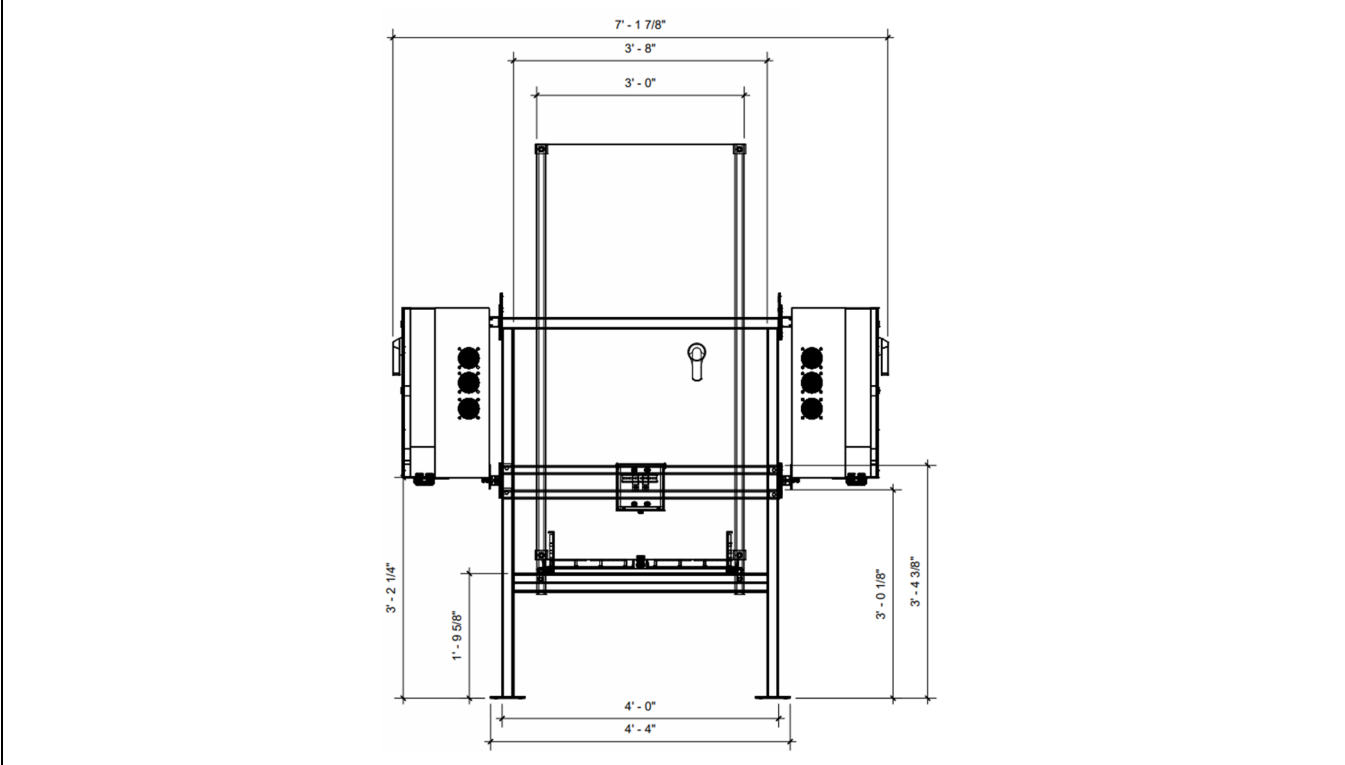
7-Inverter and 8-Inverter POWERACK: Isometric View



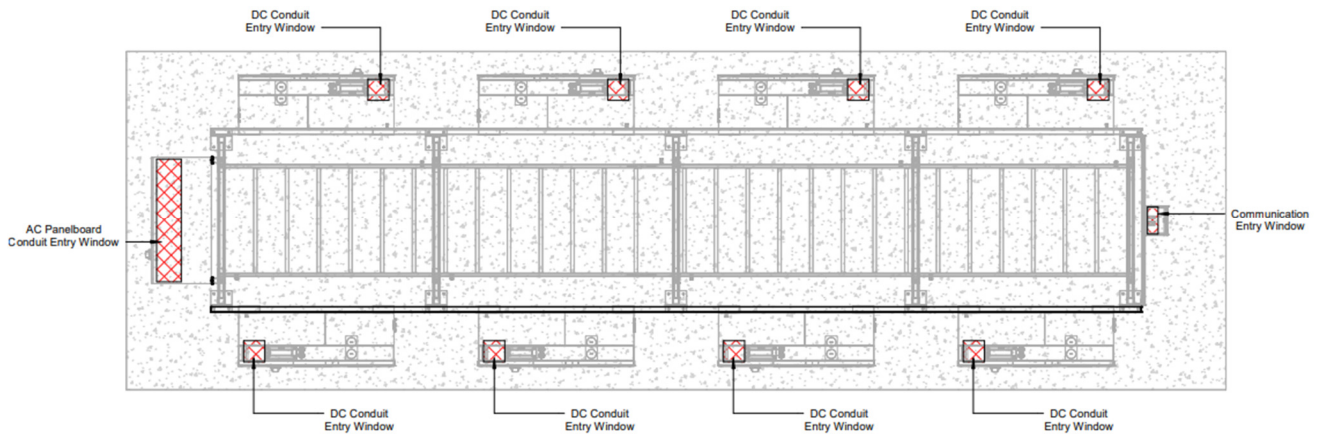
7-Inverter and 8-Inverter POWERACK: Side View



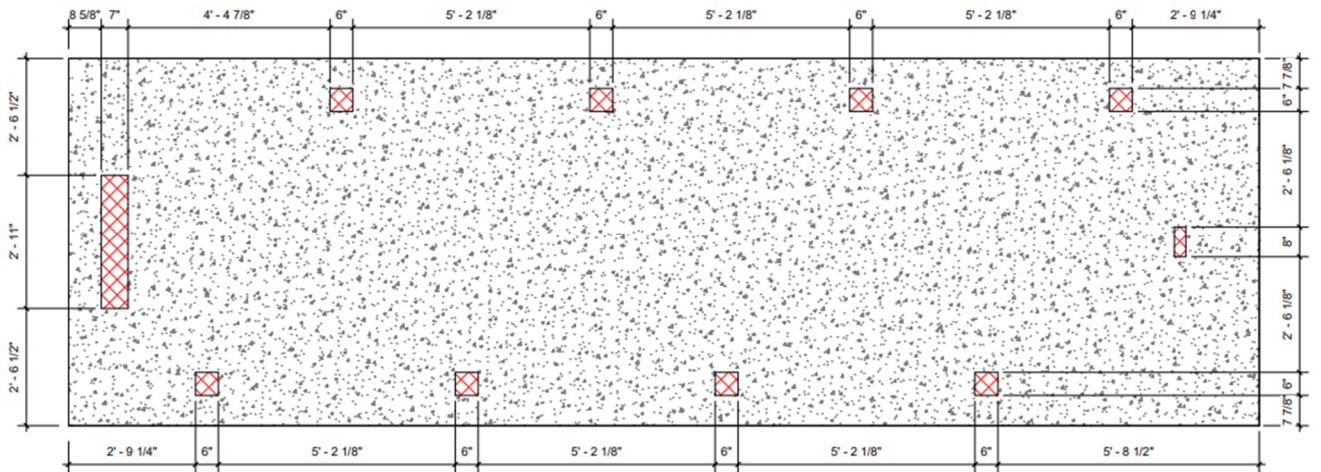
7-Inverter and 8-Inverter POWERACK: Plan View



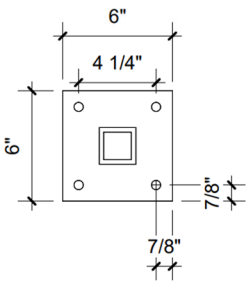
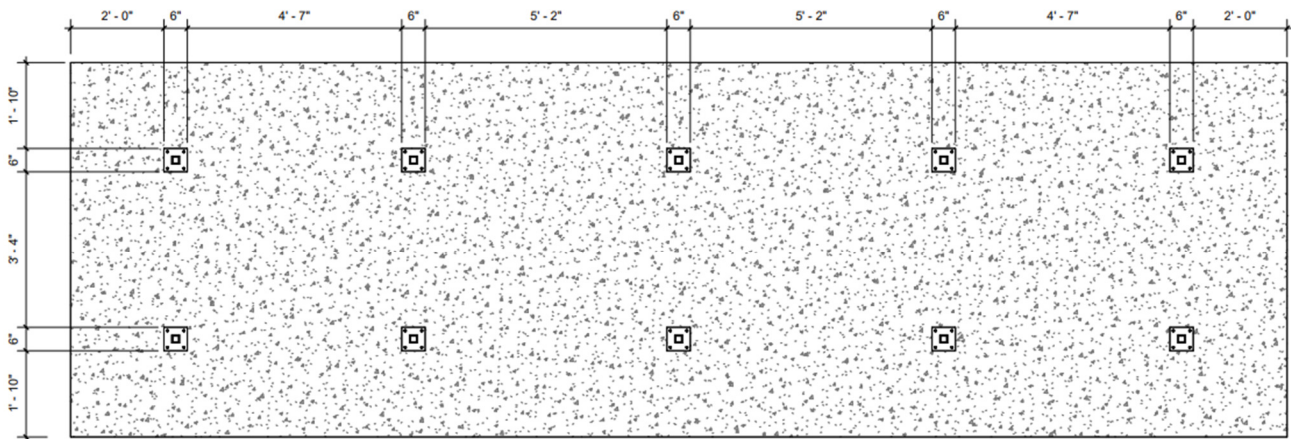
7-Inverter and 8-Inverter POWERACK: End View



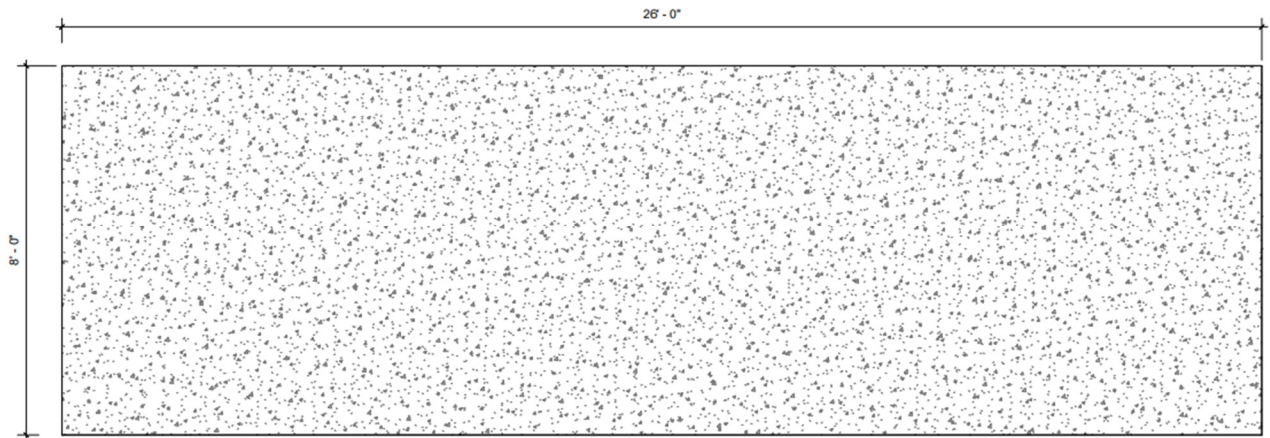
7-Inverter and 8-Inverter POWERRACK: Conduit Entry Locations



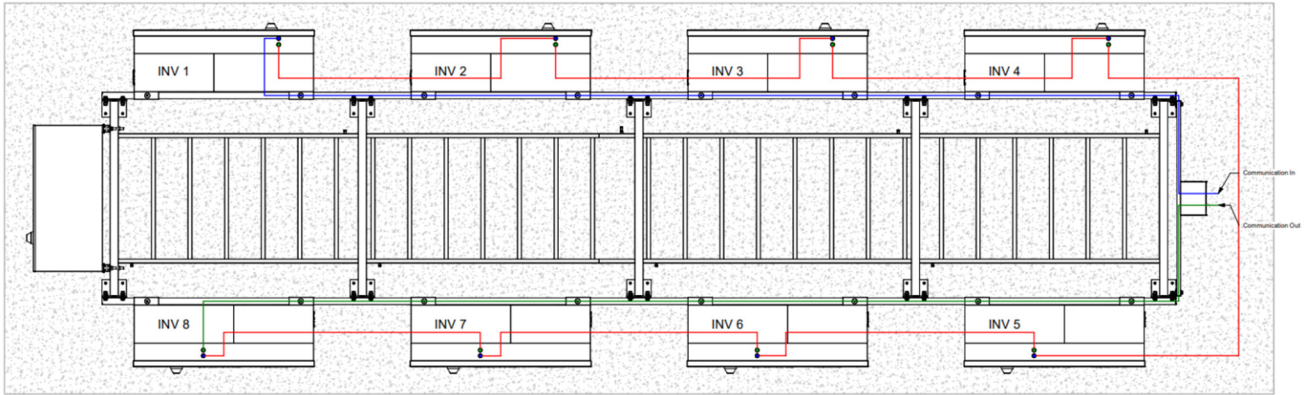
7-Inverter and 8-Inverter POWERRACK: Boxout Locations



7-Inverter and 8-Inverter POWERACK: Anchoring Locations



7-Inverter and 8-Inverter POWERACK: Recommended Pad Dimensions




- Communications Input
- Communications Output

7-Inverter and 8-Inverter POWERACK: Communications Wiring

Specifying a POWERACK

To begin, contact appeng@solectria.com to obtain the latest version of the **POWERACK** AC Combiners Intake Form. A sample form is shown below, for illustration only. Once the **POWERACK** and AC Combiner details have been specified and the Intake Form submitted to appeng@solectria.com, Yaskawa Solectria Solar will provide a quotation.



POWER RACK AC COMBINERS INTAKE FORM

PROJECT DETAILS Please fill out every line.

Project Name		
Project Address		
PV System size (kWAC)		
Inverter AC Output Voltage	<input type="checkbox"/> 600V AC	<input type="checkbox"/> 480V AC
Total Number of Power Racks		

(Form accommodates up to three different PowerRack Configurations: Group A, Group B, Group C)

POWER RACK GROUP A

Number of Inverters x Size (kVA)		
SCCR Required for AC Combiner Disconnect		
Required Wattage for Auxilliary Power, 3 Phase	<input type="checkbox"/> Duplex 120V Outlet	
Number of Identical Power Racks in this Group		

POWER RACK GROUP B

Number of Inverters x Size (kVA)		
SCCR Required for AC Combiner Disconnect		
Required Wattage for Auxilliary Power, 3 Phase	<input type="checkbox"/> Duplex 120V Outlet	
Number of Identical Power Racks in this Group		


POWER RACK GROUP C

Number of Inverters x Size (kVA)		
SCCR Required for AC Combiner Disconnect		
Required Wattage for Auxilliary Power, 3 Phase	<input type="checkbox"/> Duplex 120V Outlet	
Number of Identical Power Racks in this Group		

NOTE: AC Combiner Boxes are supplied with lug-only terminations at the output. If ground fault detection, ground fault breakers, or arc flash reduction is required, an external enclosure with an external breaker should be installed between the AC Combiner and the transformer.

PROJECT DETAILS ---> **Number of Inverter x Size:** Please break down the total number of inverters. For example: 20 x 250kVA and 15 x 200kVA, the sum of all fields should be equal to the total number of inverters and the sum of all sizes must be equal to the total PV system kWAC

POWER RACK GROUP ---> **SCCR Required for AC Combiner Disconnect:** Short Circuit Current Rating for the AC combiner Disconnect. This value must be higher than the Transformer calculated available fault current at the AC combiner.



Yaskawa America, Inc. | Yaskawa Solectria Solar | 1-978-683-9700 | solectria.com